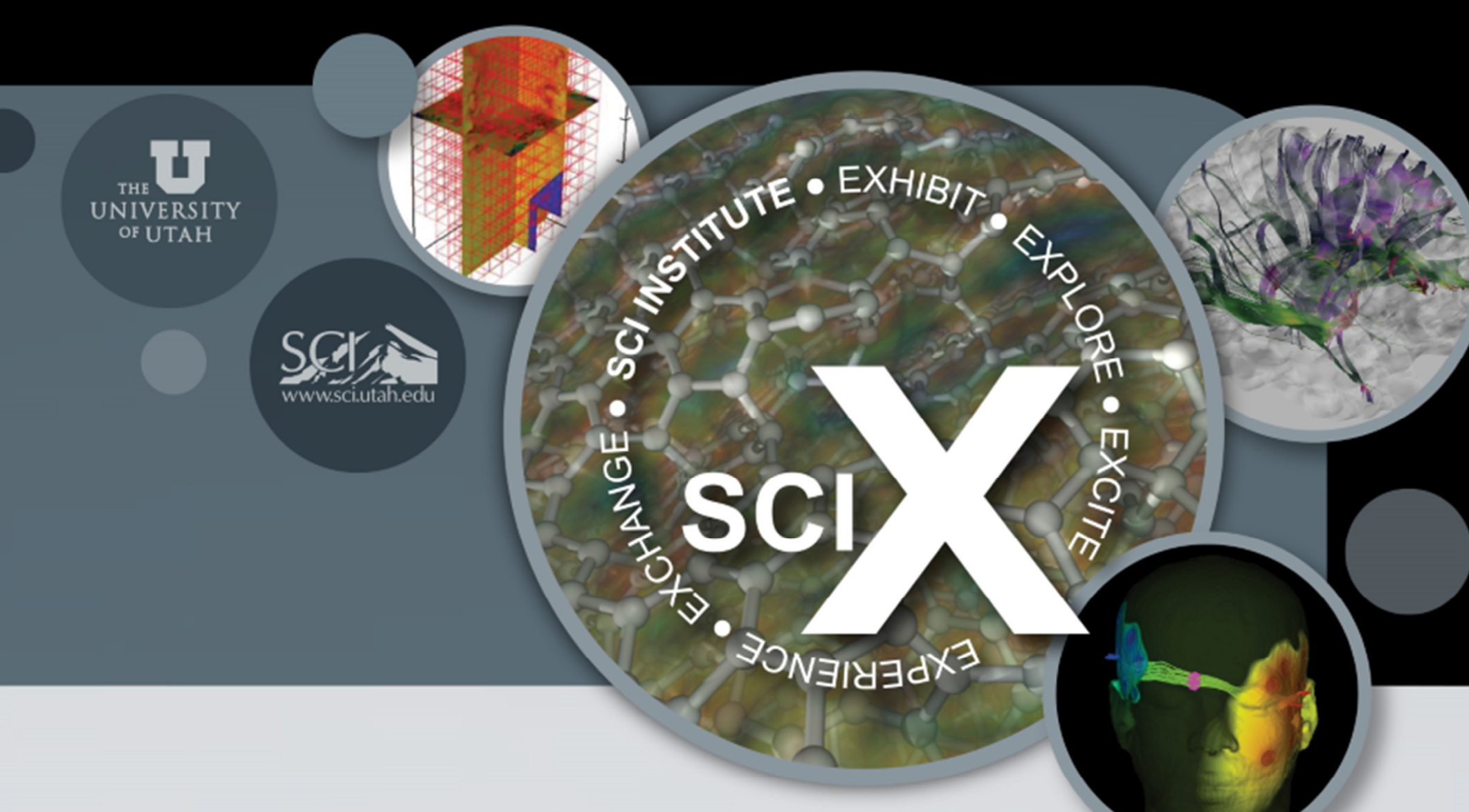


# Biomedical Image and Data Analysis Core - BIDAC

Josh Cates, PhD (Director) – Clement Vachet, MS, MBA (Associate Director) – <http://bidac.sci.utah.edu>



## BIDAC overview

- Health science core facility
- Offer consulting services
- Complement other cores
- Leverage SCI expertise
- Enable new collaborations

## BIDAC mission

- Facilitate collaborations
- Build new infrastructure
- Write shared papers/grants
- Enable new science

## BIDAC expertise

- Image processing
- Quantitative analysis
- Scientific visualization

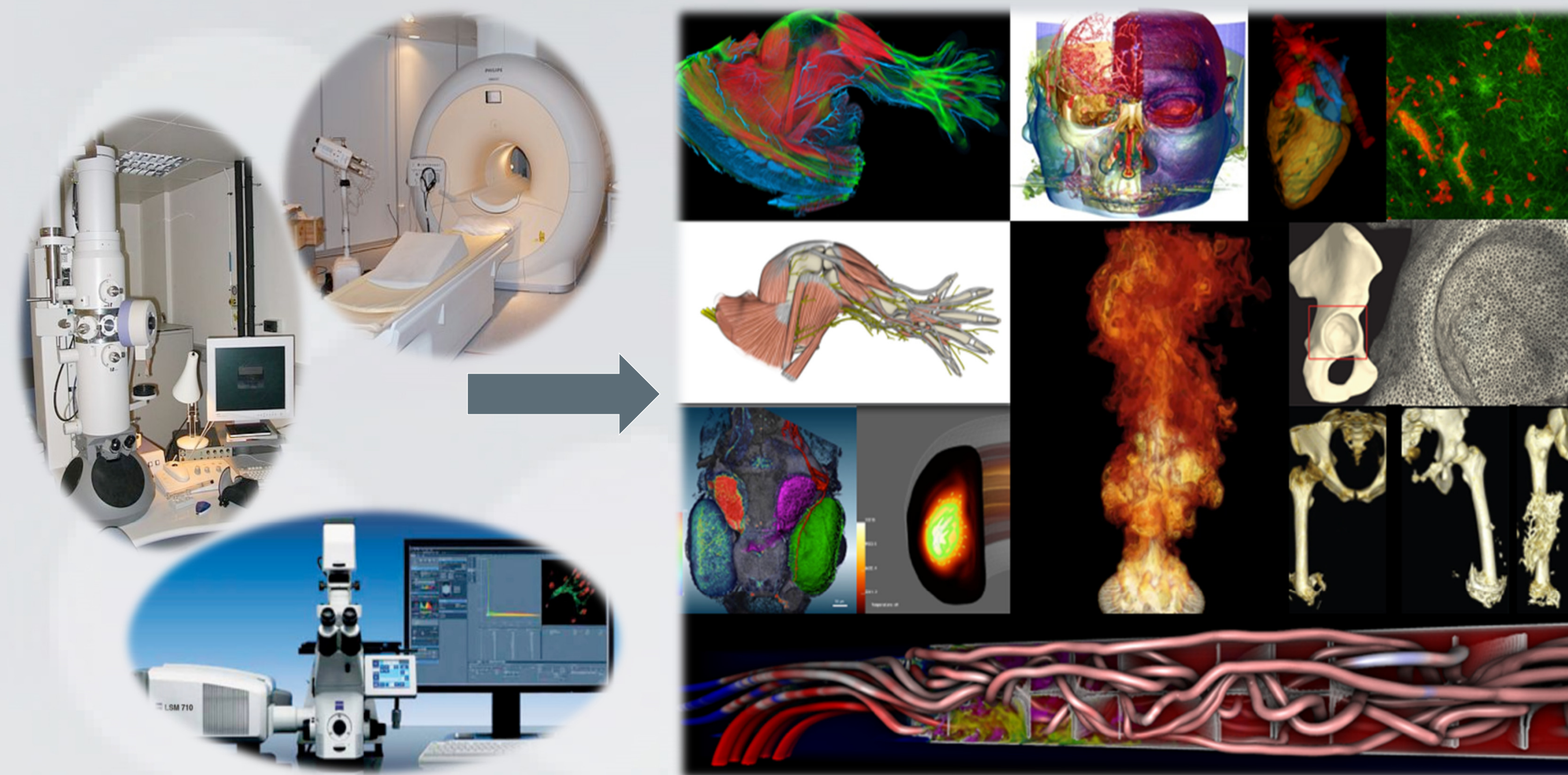
## BIDAC services

- Consulting services
- Image analysis
- Software prototyping
- Workflow development
- Training

Acknowledgements: BIDAC is supported by the VP of Health Sciences and the SCI Institute



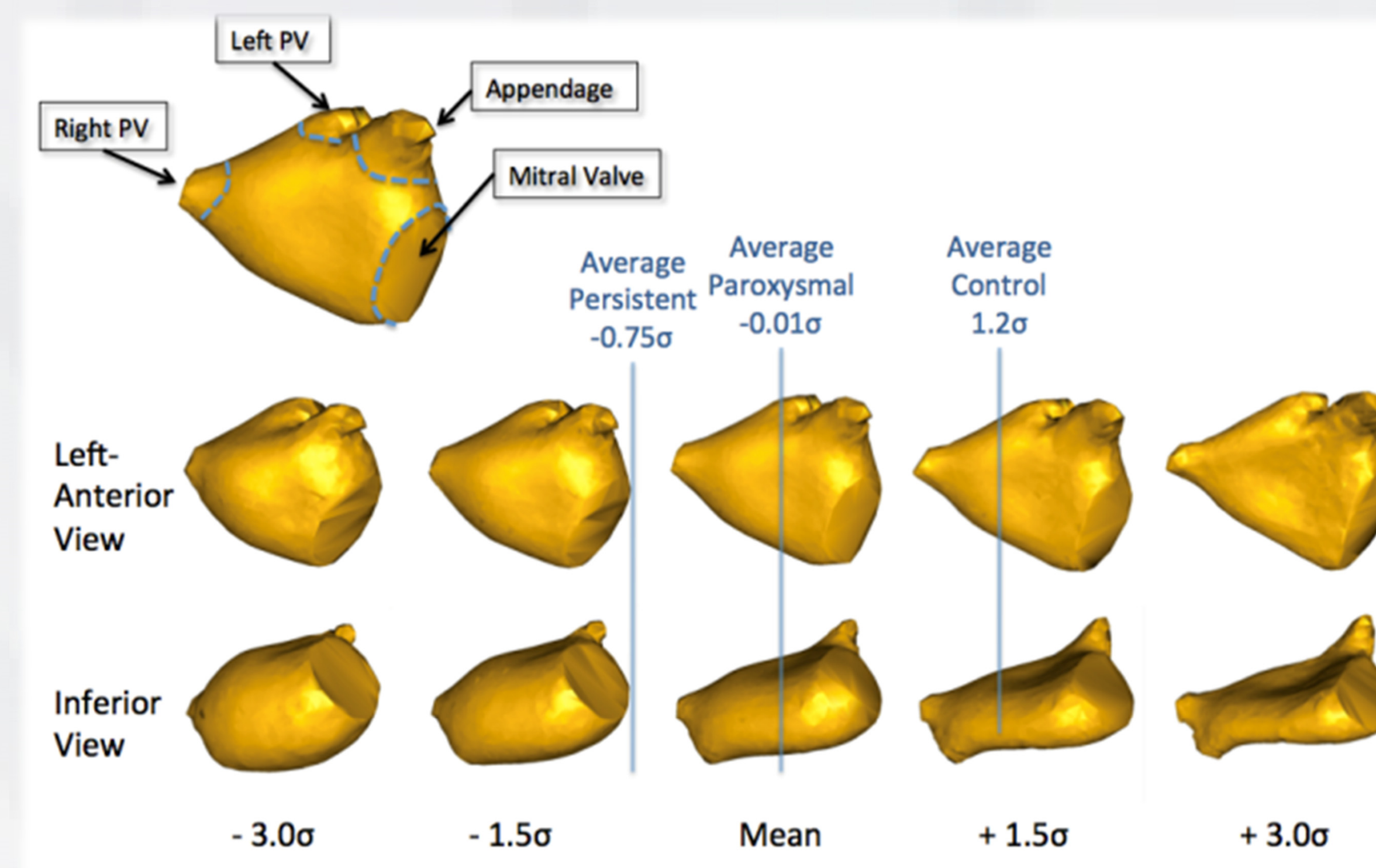
Synergy with other cores



From raw data images to insight



Leverage SCI expertise & software



Statistical shape analysis (applications: cardiology, orthopaedics...)

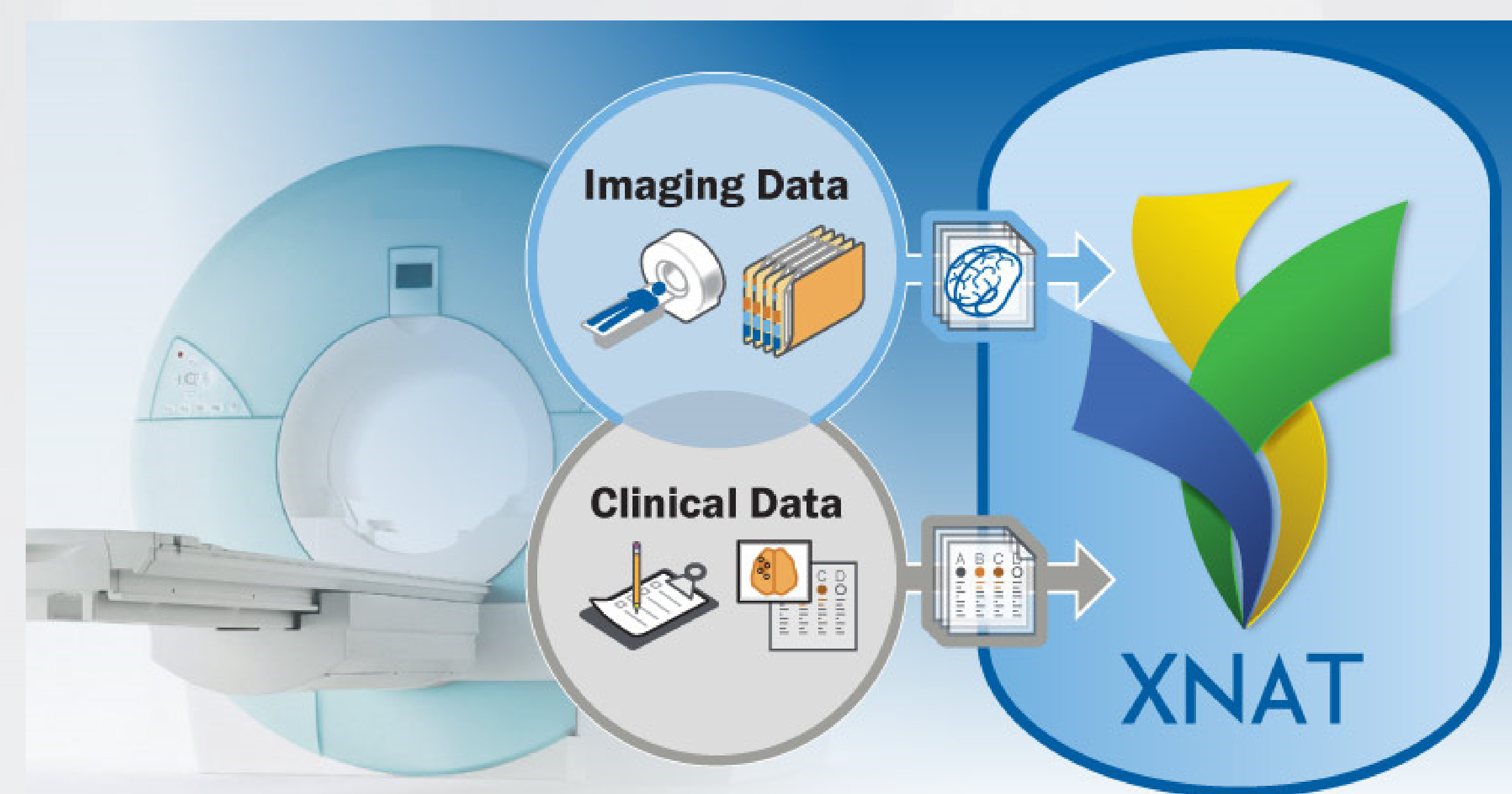
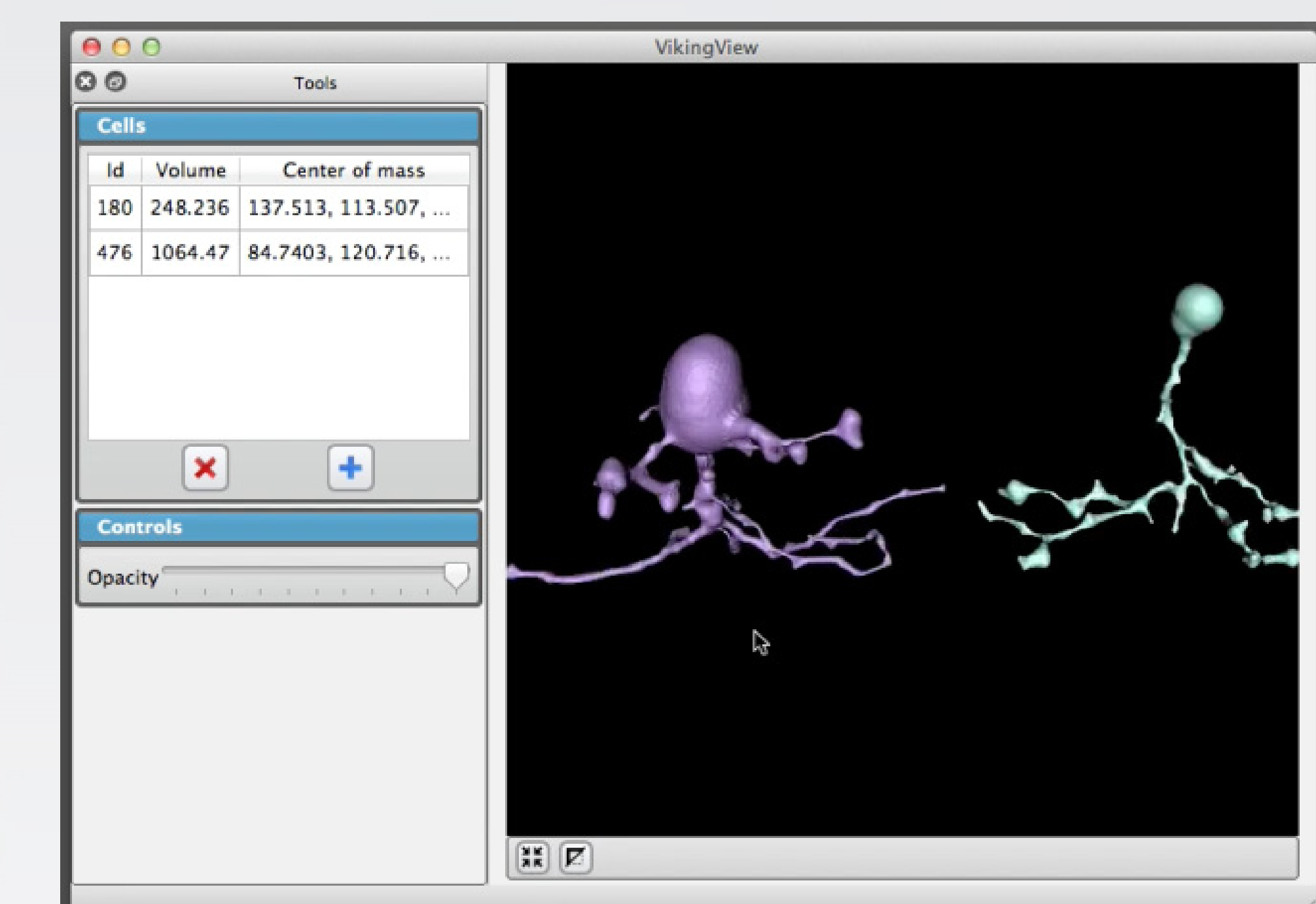


Image archiving and processing for PHI data in protected environment at CHPC (applications: research studies, clinical trials...)



Software for retinal connectomics (database access and 3D visualization of retinal neural circuitry)

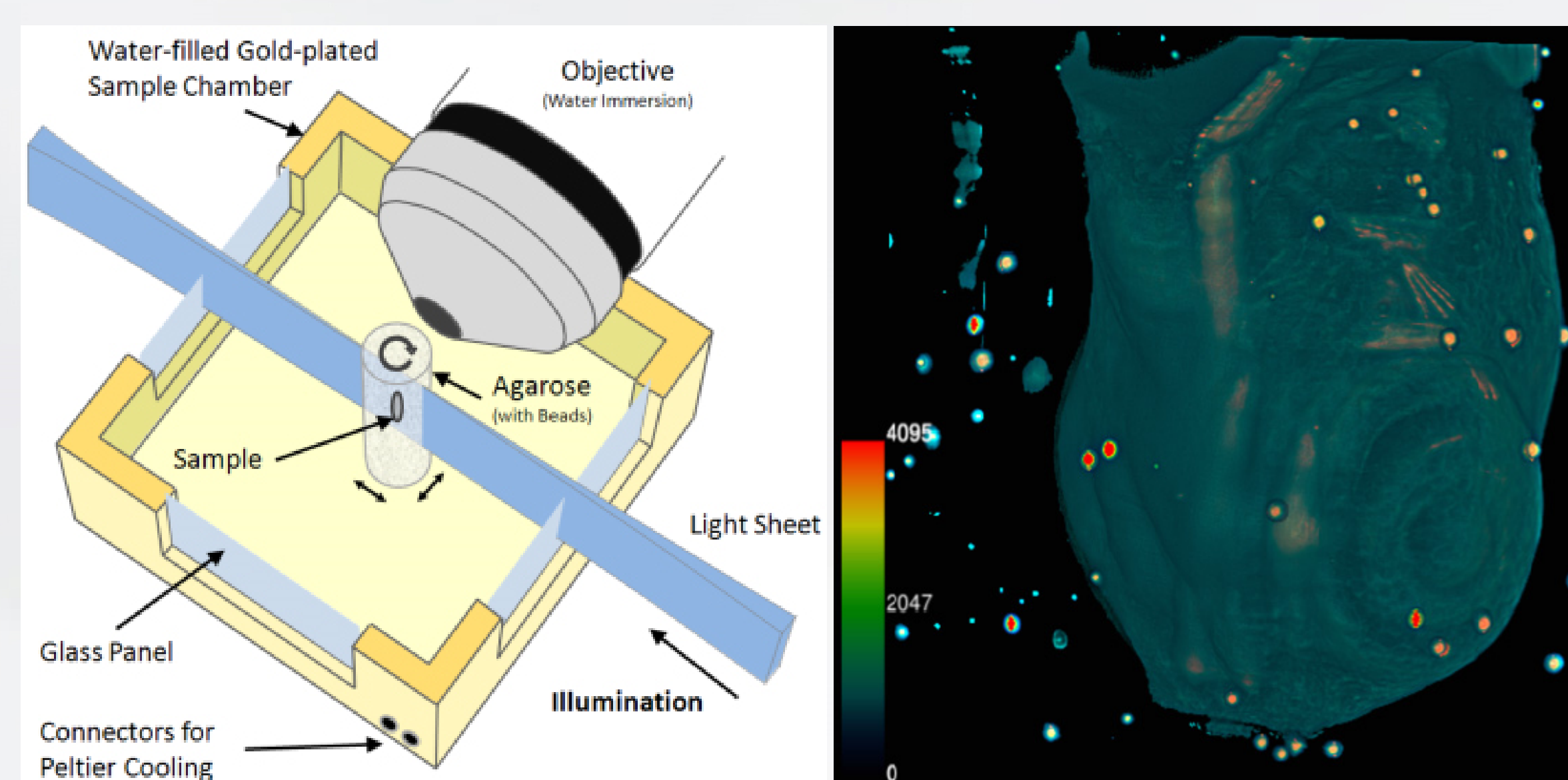
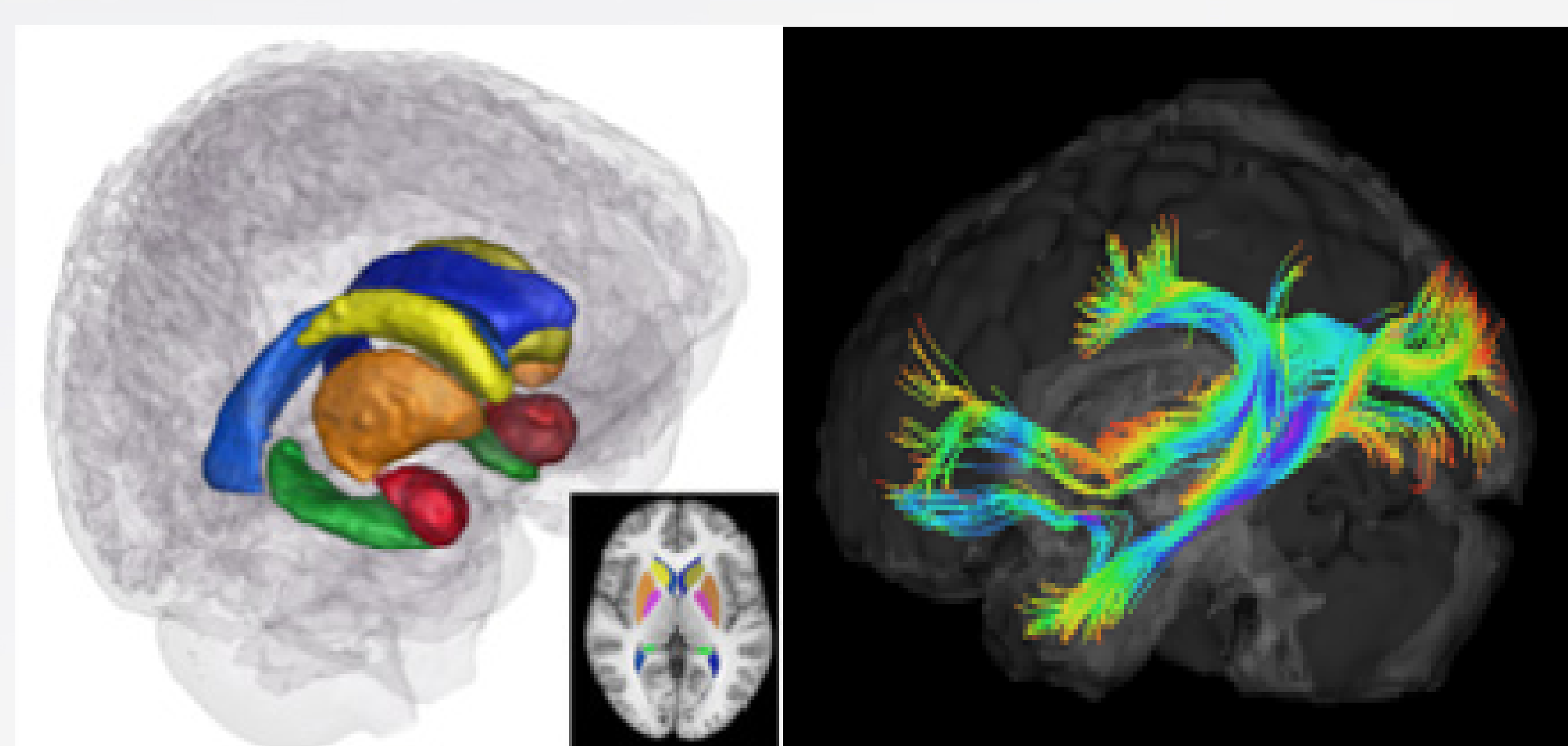
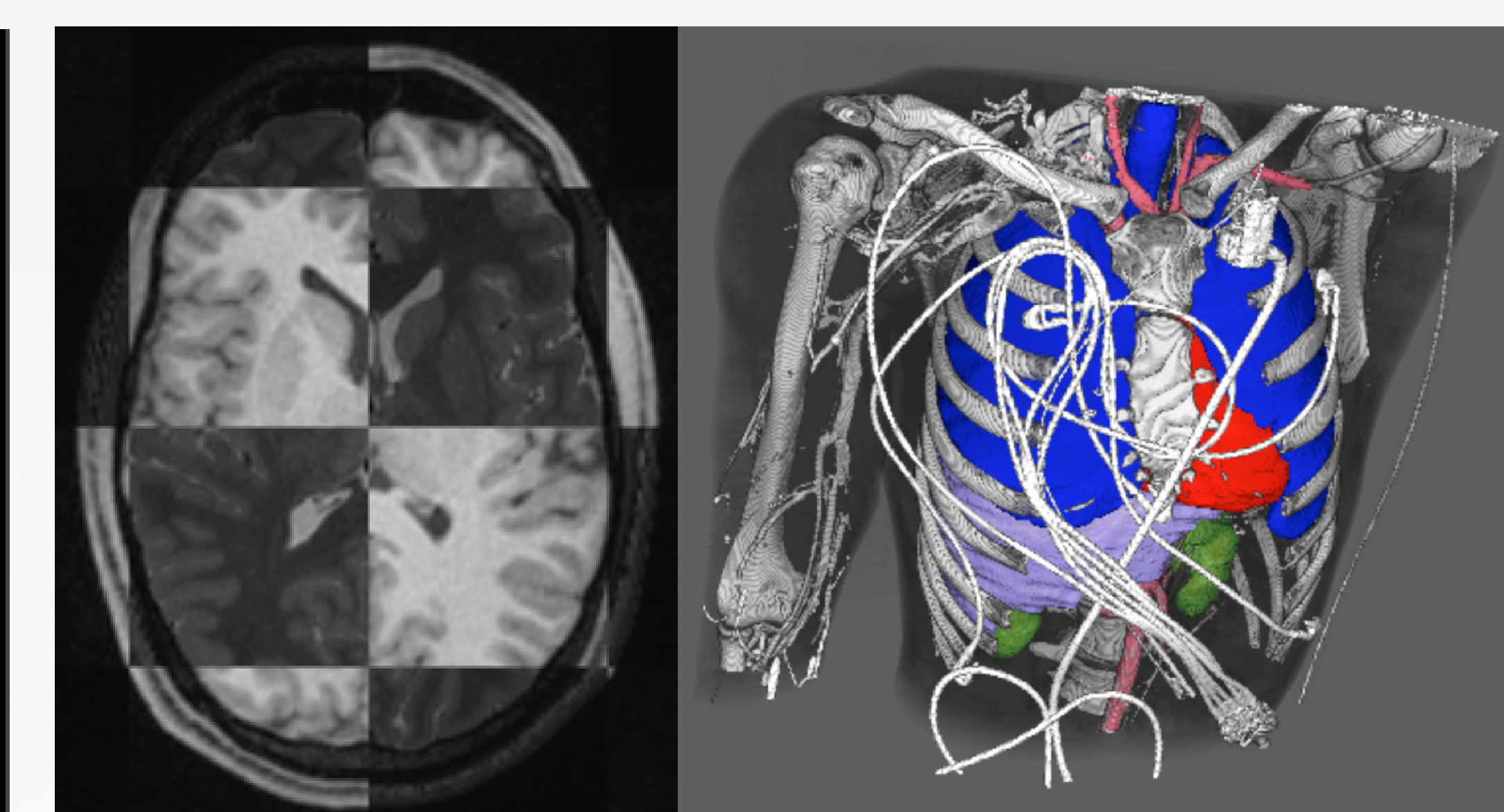


Image analysis and visualization for microscopy imaging



Structural MRI and DTI analysis for neuroimaging (applications: human, rodent imaging...)



Semi-automated or automated image registration and segmentation