

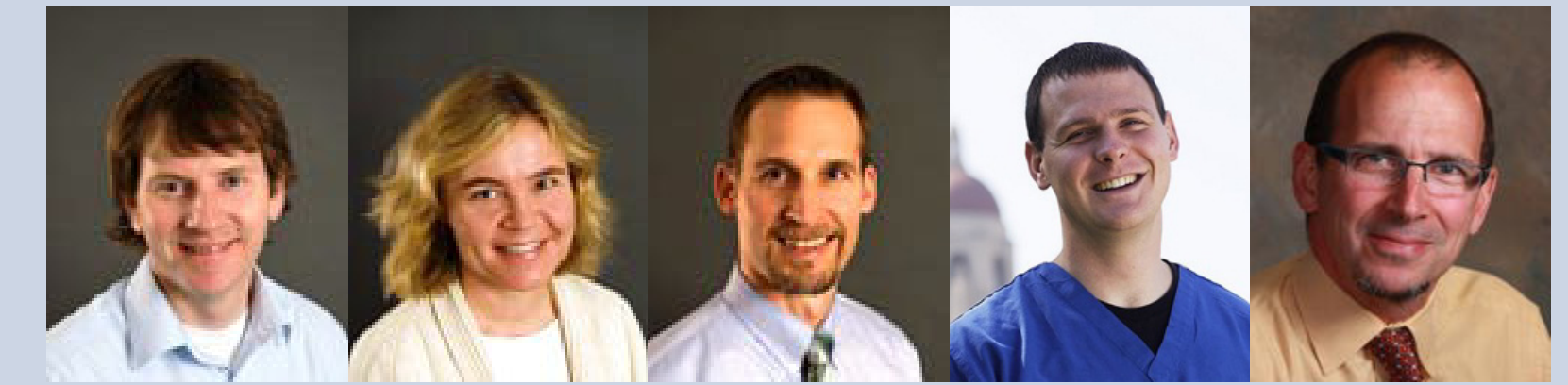
Improving Defibrillator use in Pediatrics using Computer Simulation

SCI Contributors



Jess Tate, Ahrash Poursaid, Jeroen Stinstra, Rob MacLeod

Clinical Collaborators

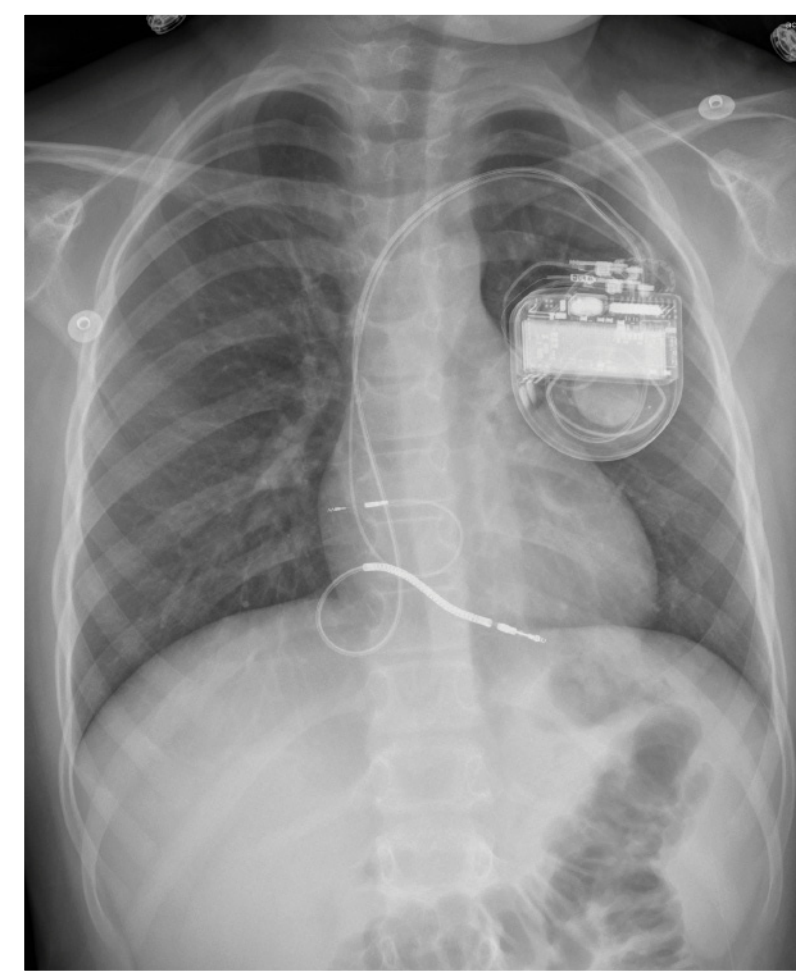


Thomas Pilcher, Elizabeth Saarel, Michael Puchalski, Matt Jolley, John Triedman

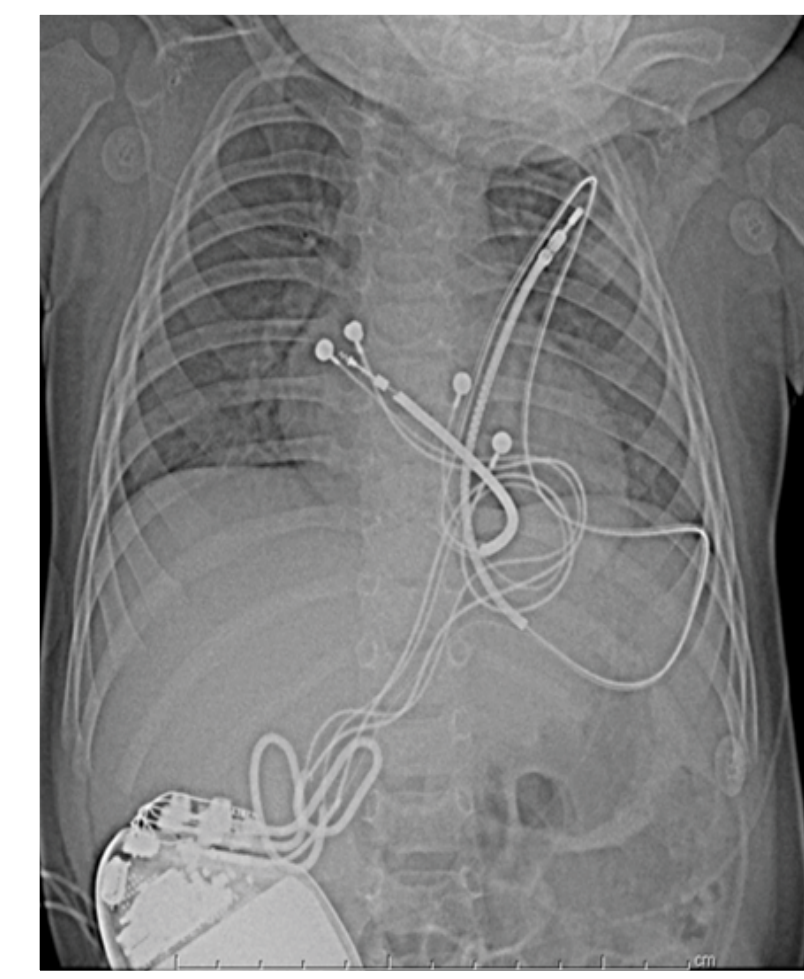


Medical Motivation:

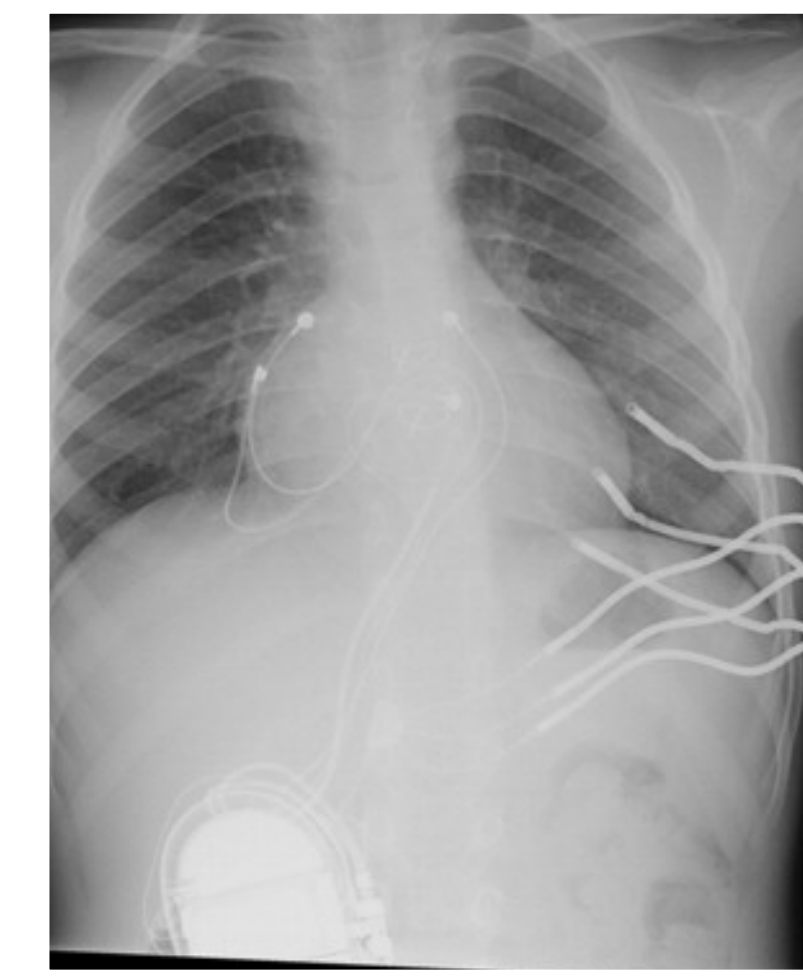
Provide physicians with a better understanding of the effects of Implantable Cardioverter Defibrillators (ICDs) on the patient through computer modelling.



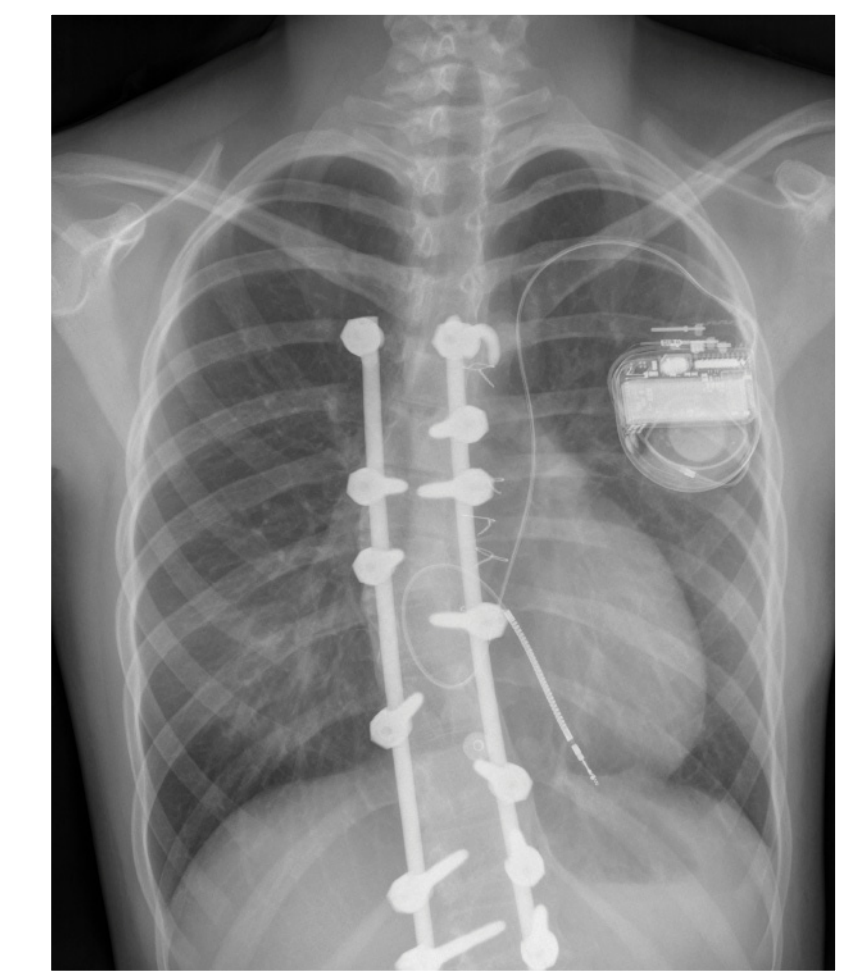
Normal ICD Placement



Comparing ICD placement in infants

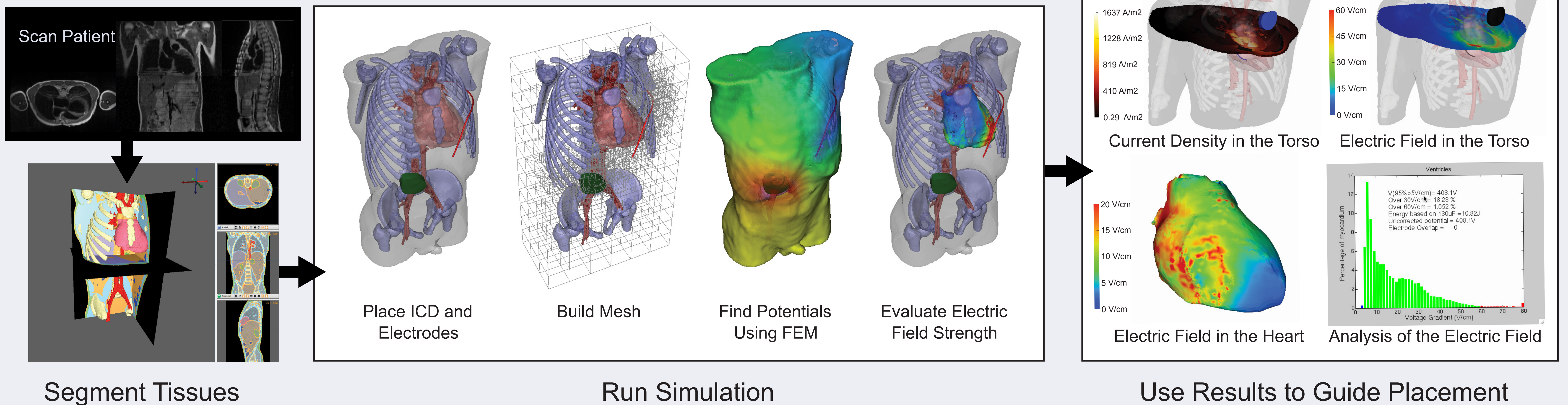


Testing subcutaneous ICD electrodes

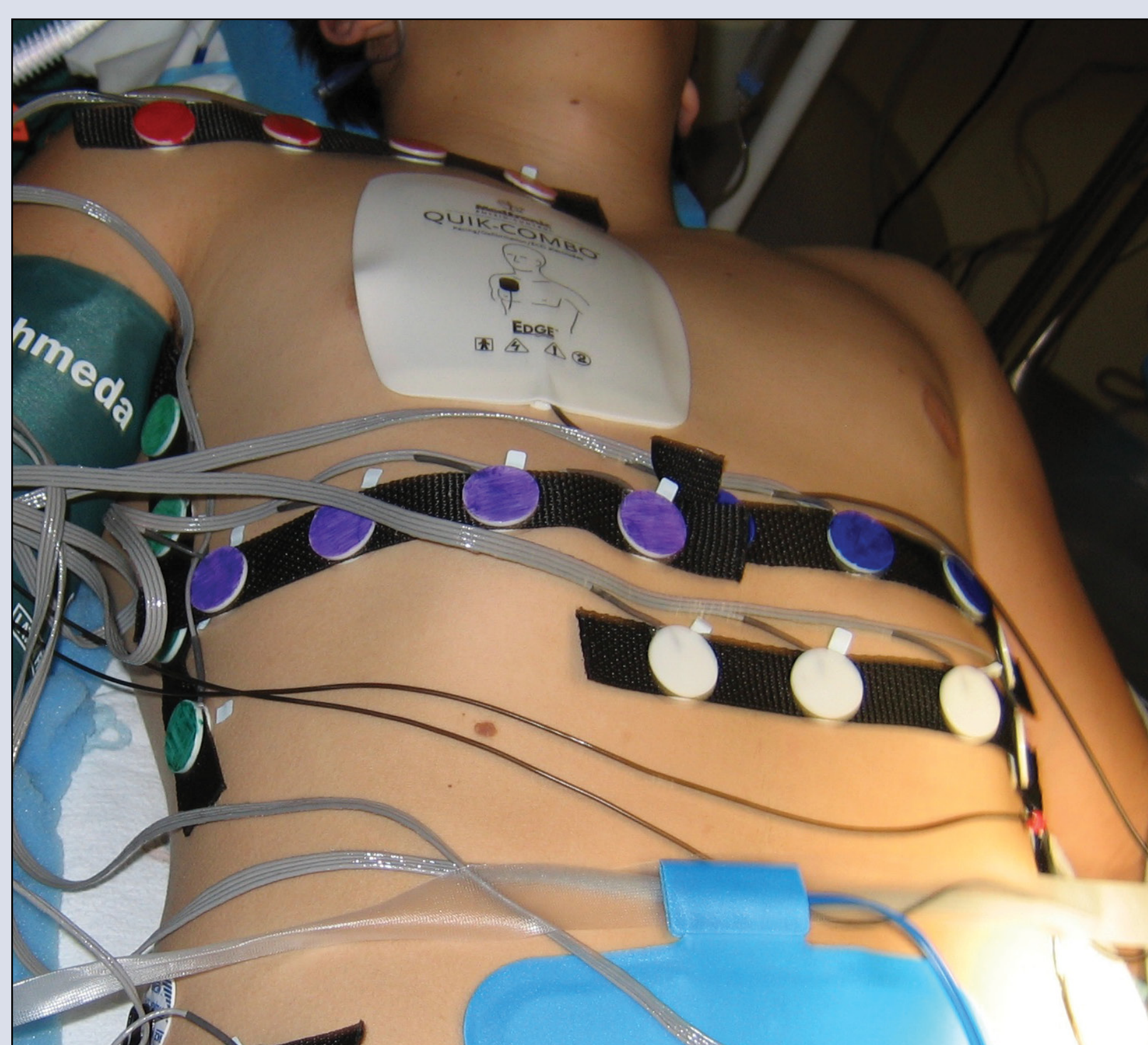


Evaluating role of surgical metal in the body

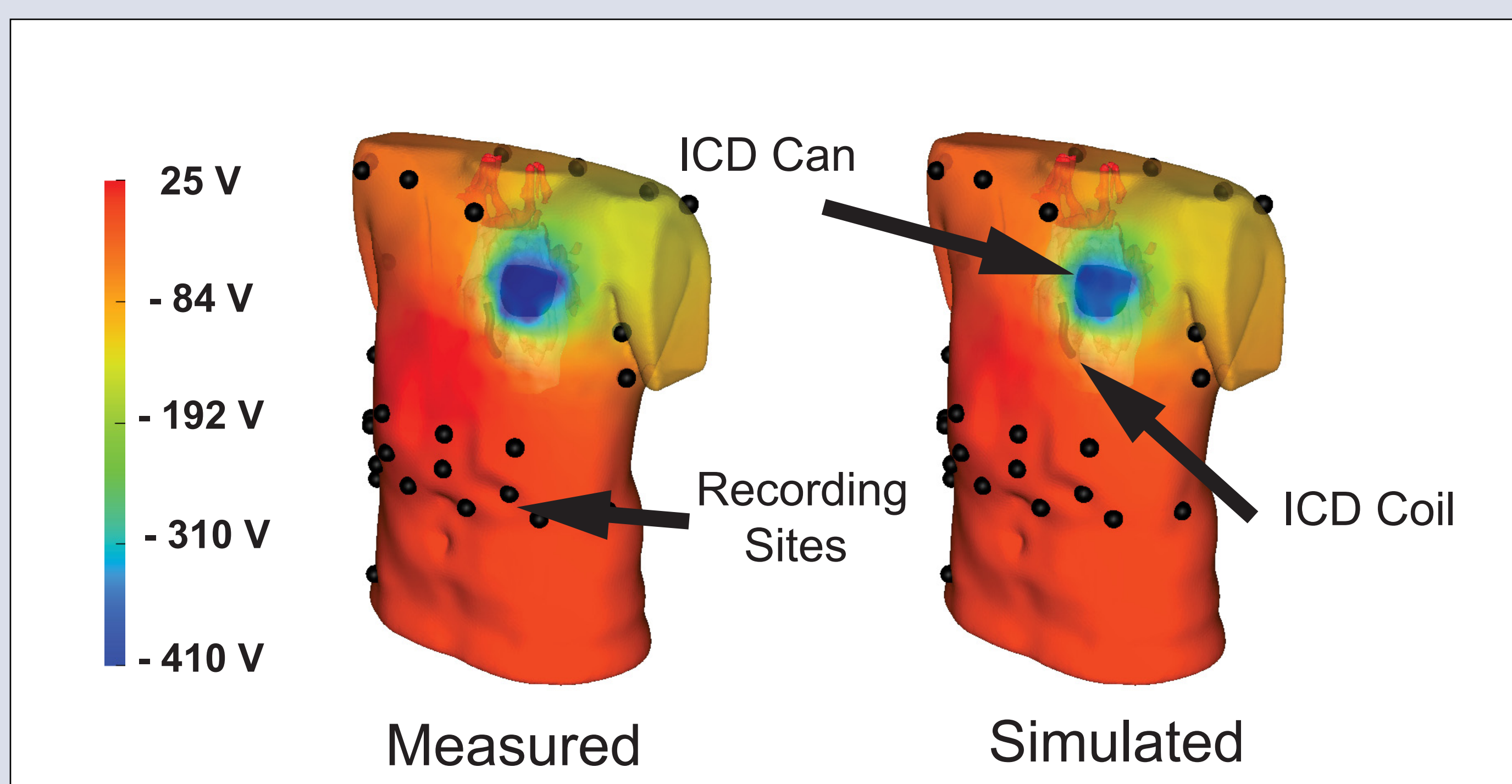
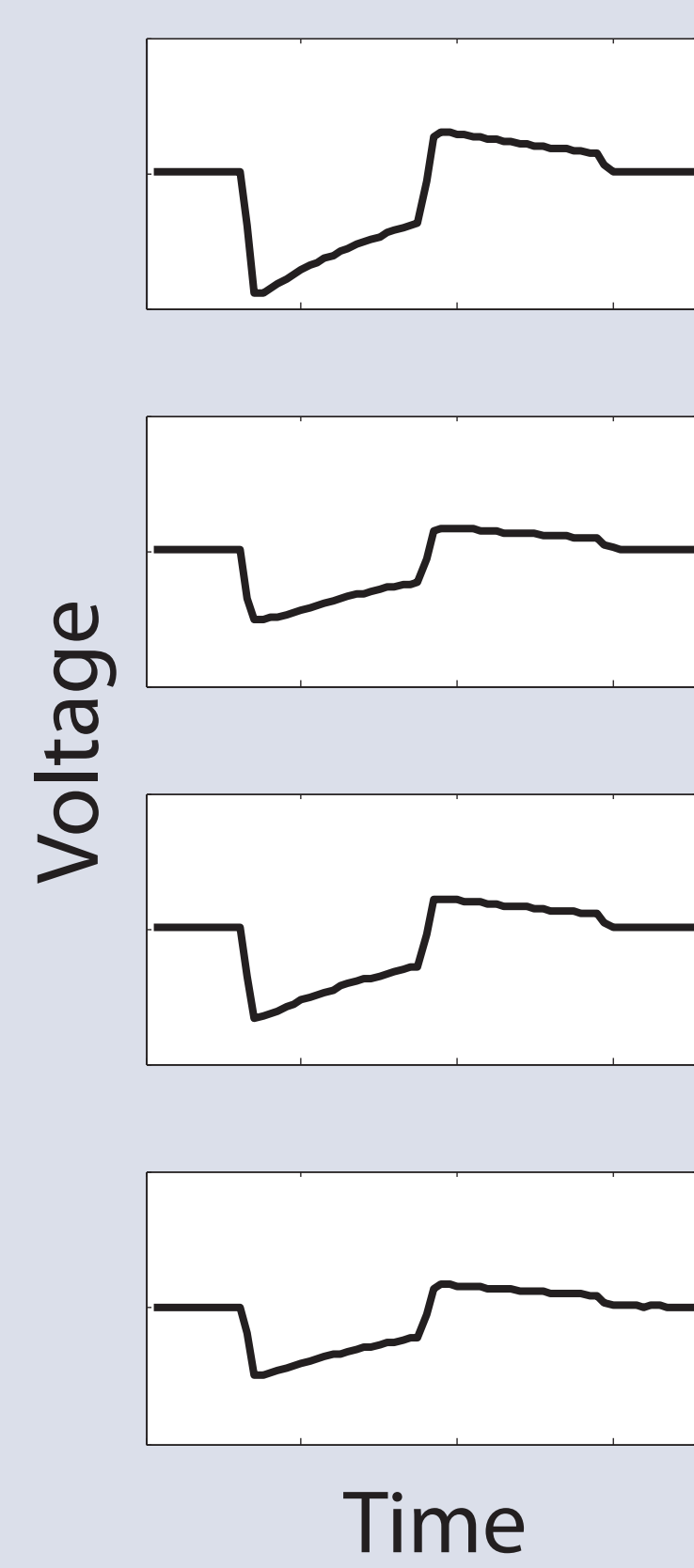
Patient Specific Pipeline



Model Validation



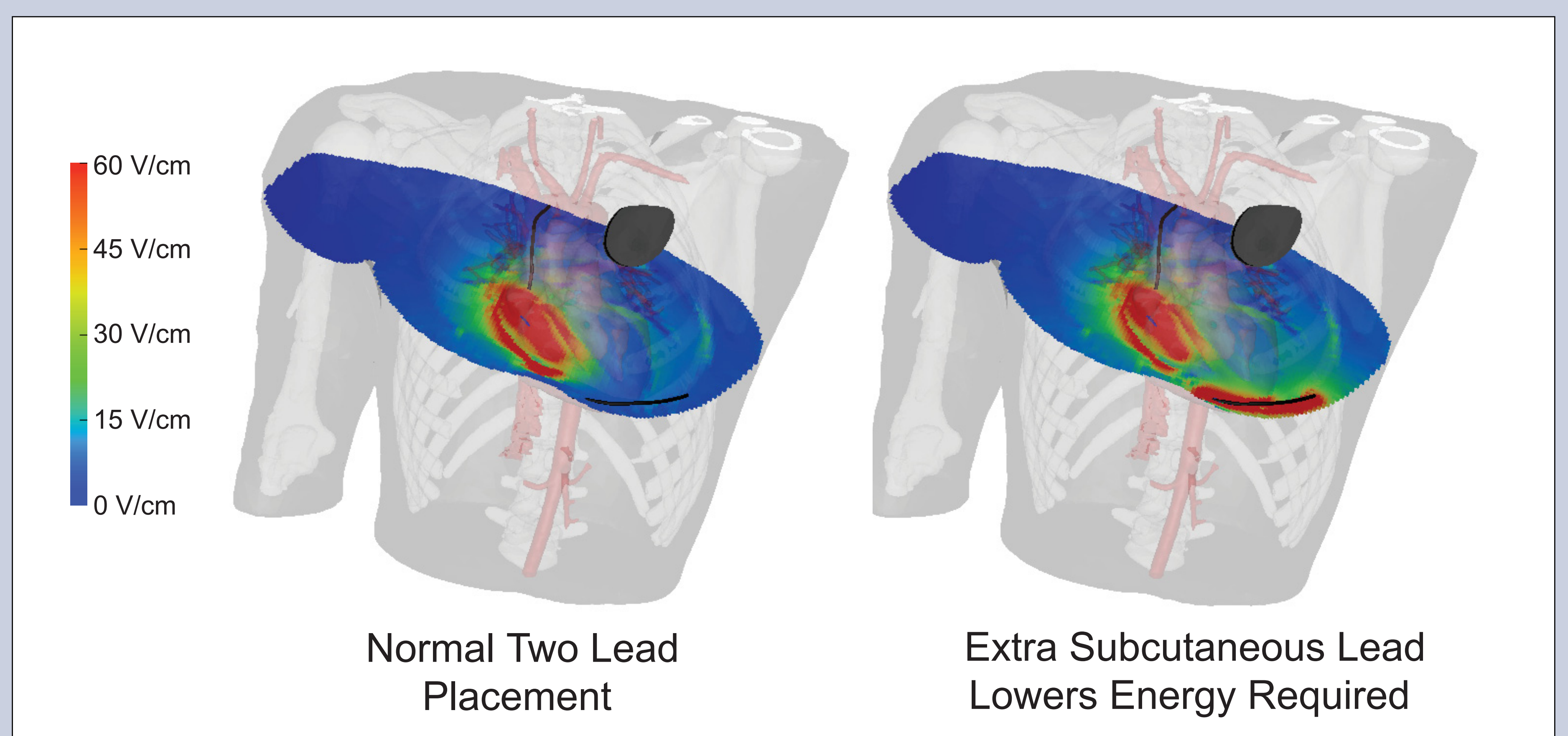
Recording ICD potentials on the body surface



Comparisons of measured and simulated ICD potentials

Additional Applications

New Subcutaneous Implantations



Effects of Spinal Rods on Defibrillation

