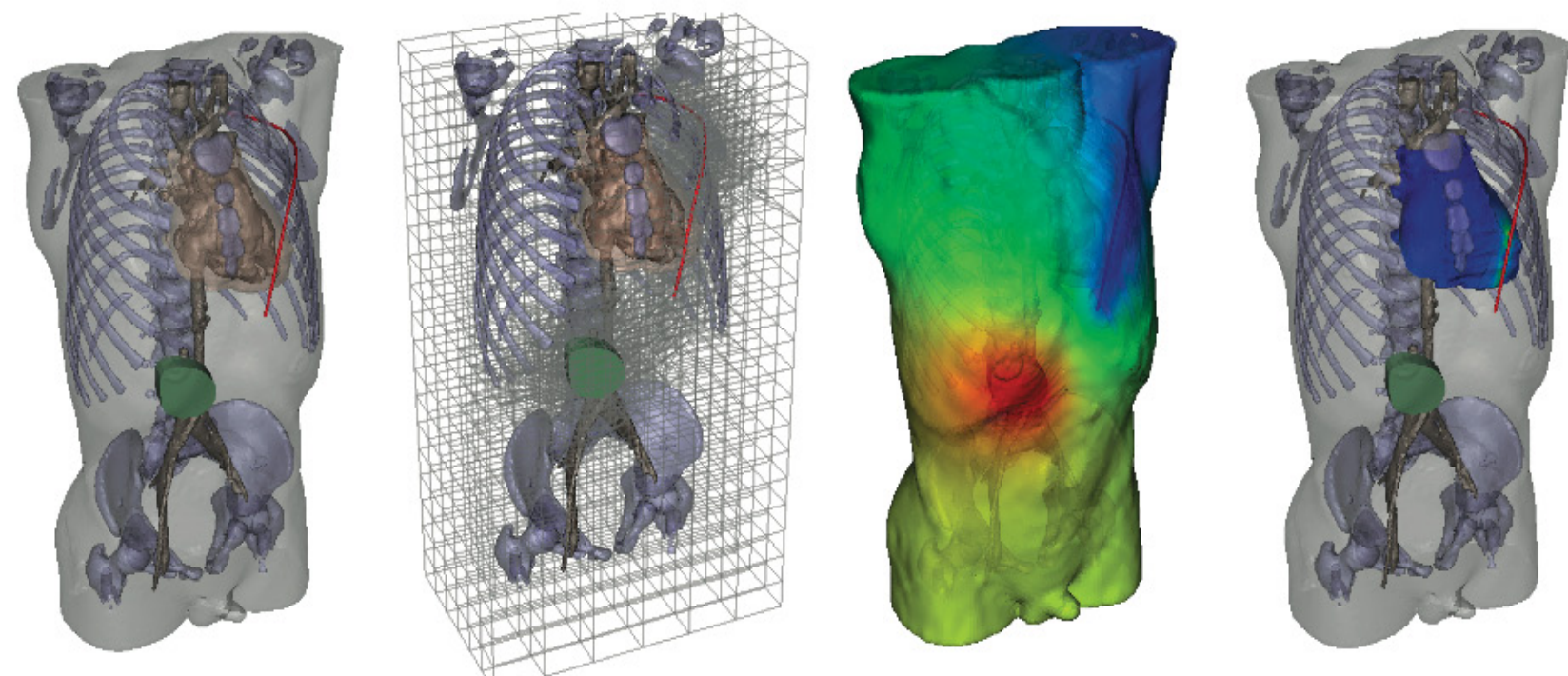
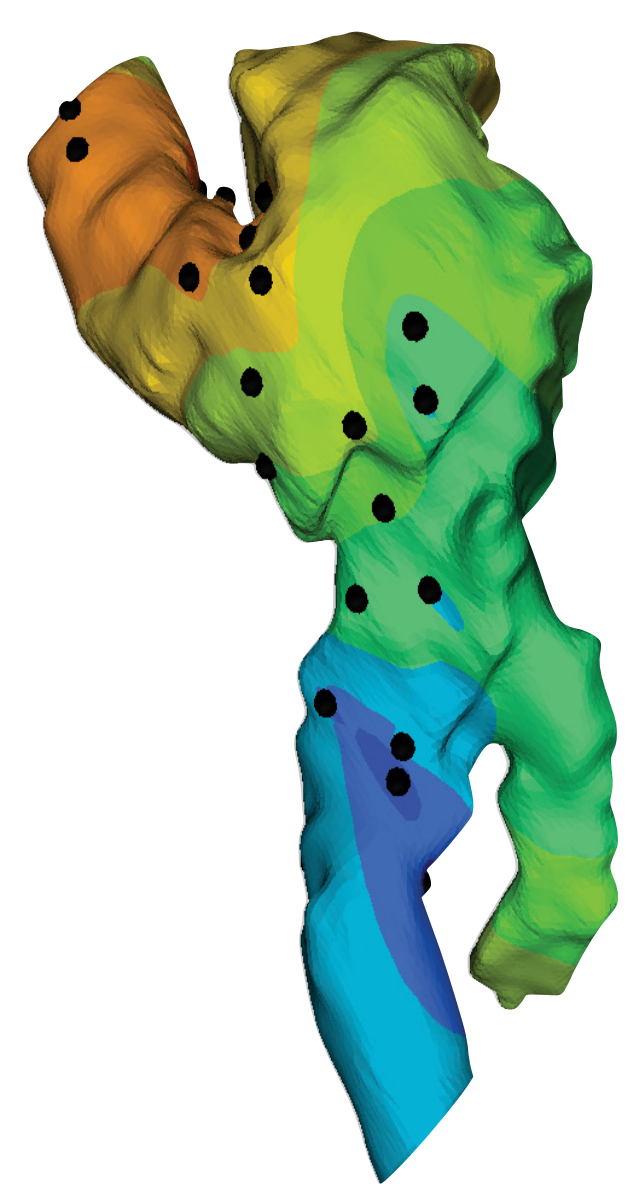


Defibrillation



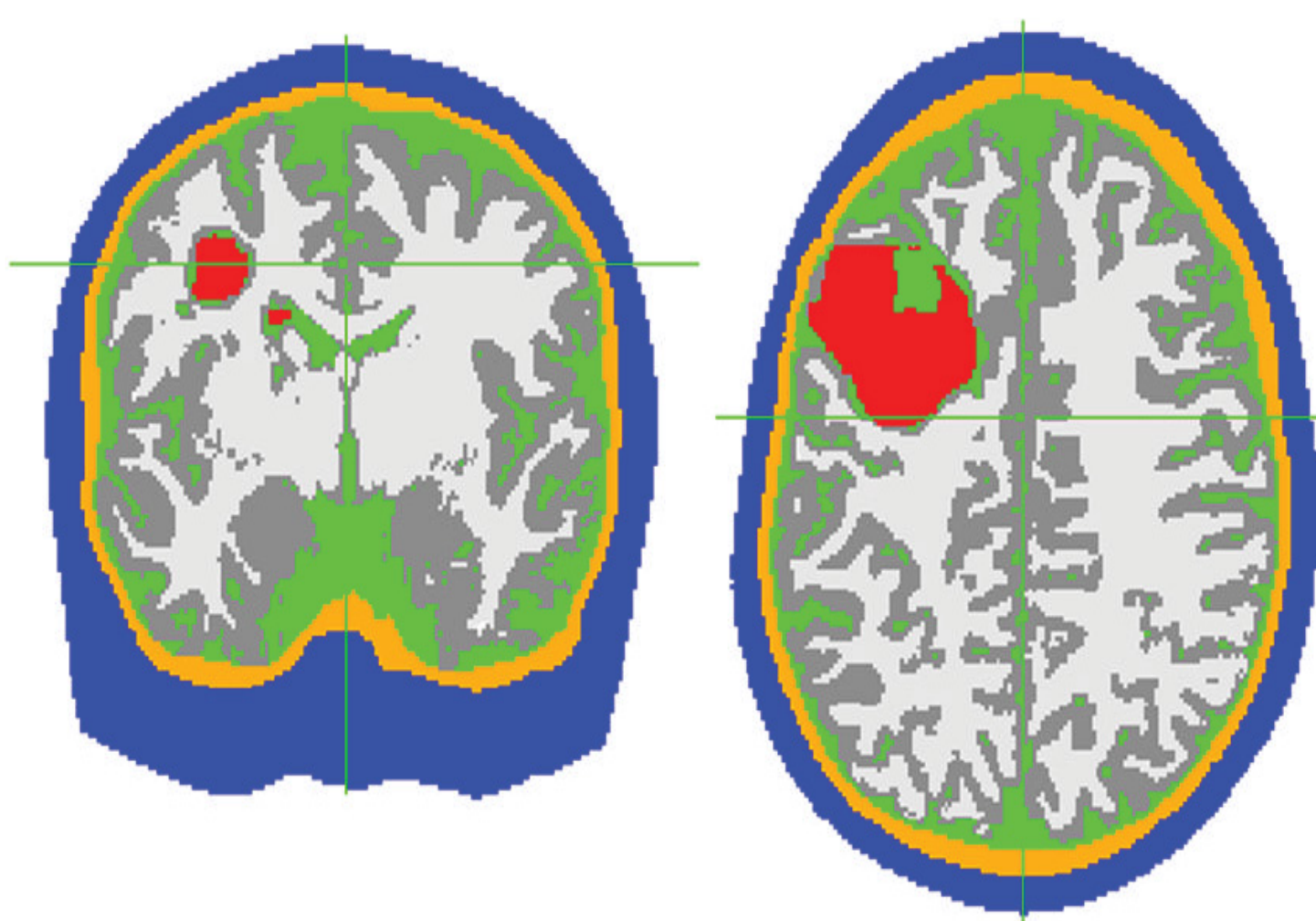
Model of human torso with an ICD

Atrial Fibrillation



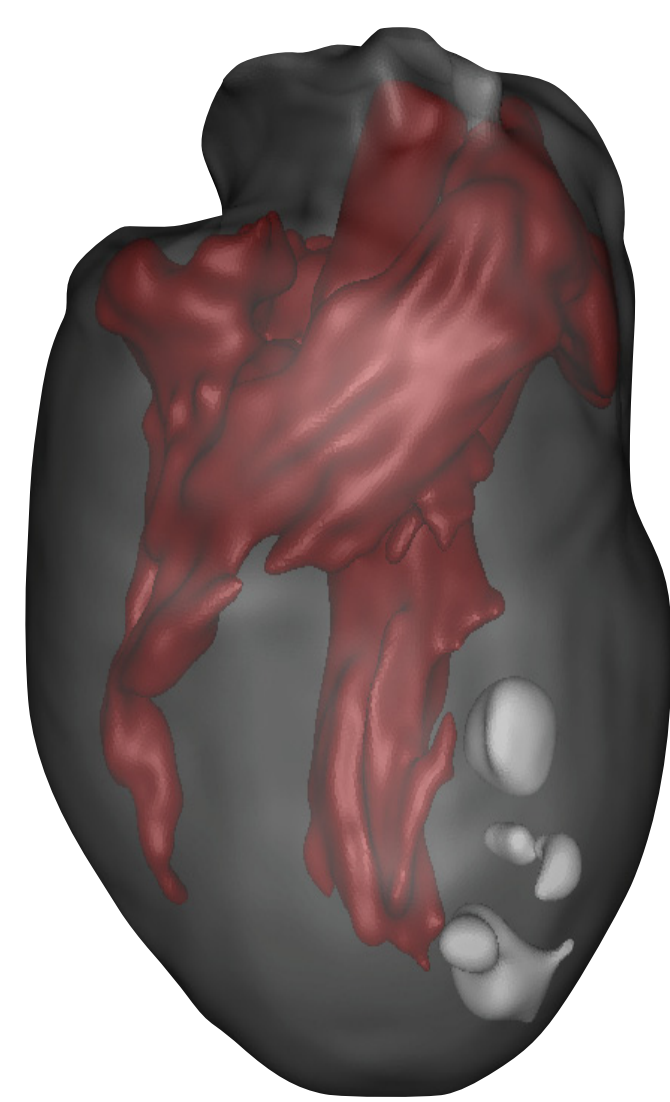
Model of the right atrium with measurement electrode locations

Epilepsy



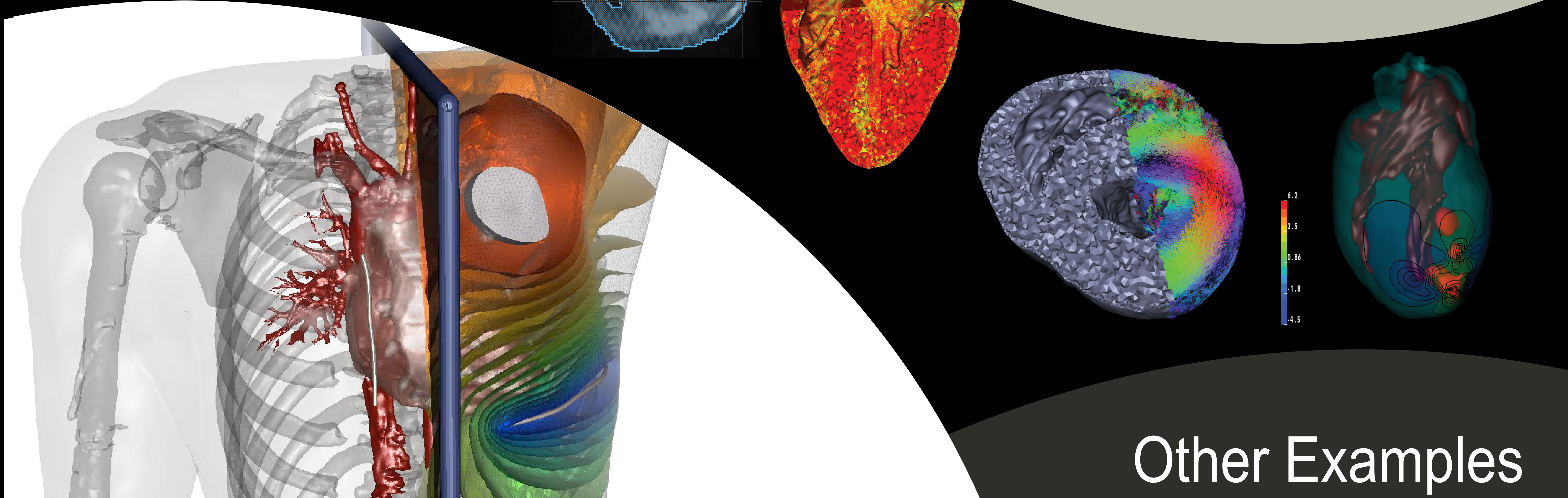
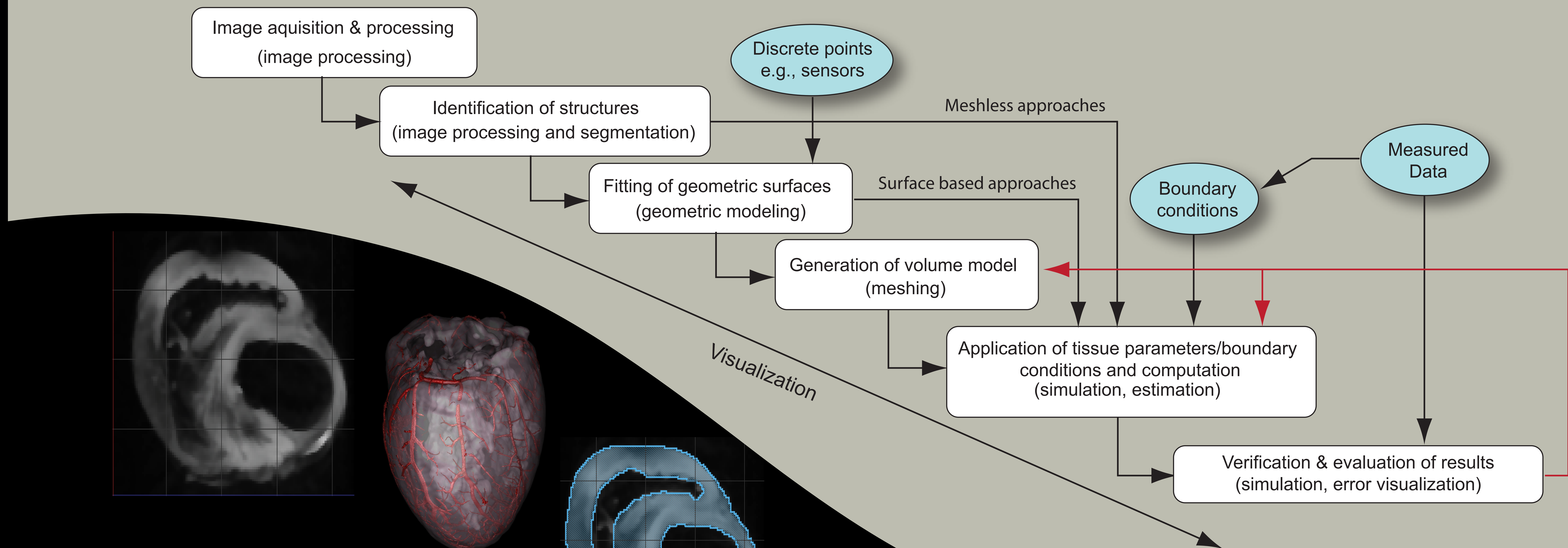
Model of human skull and brain

Myocardial Ischemia

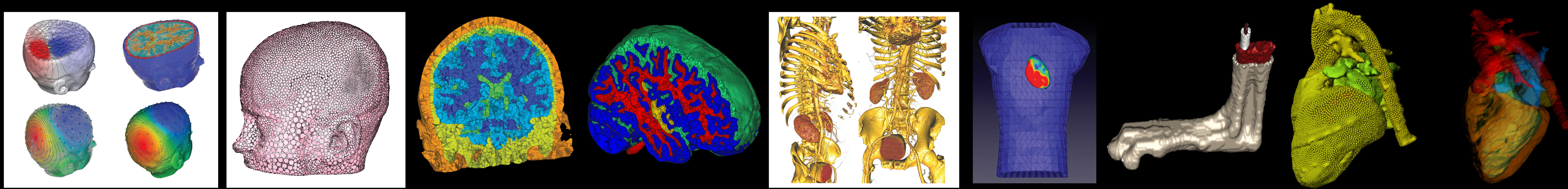


Model of a heart with ischemic tissue

Image Based Modeling Pipeline



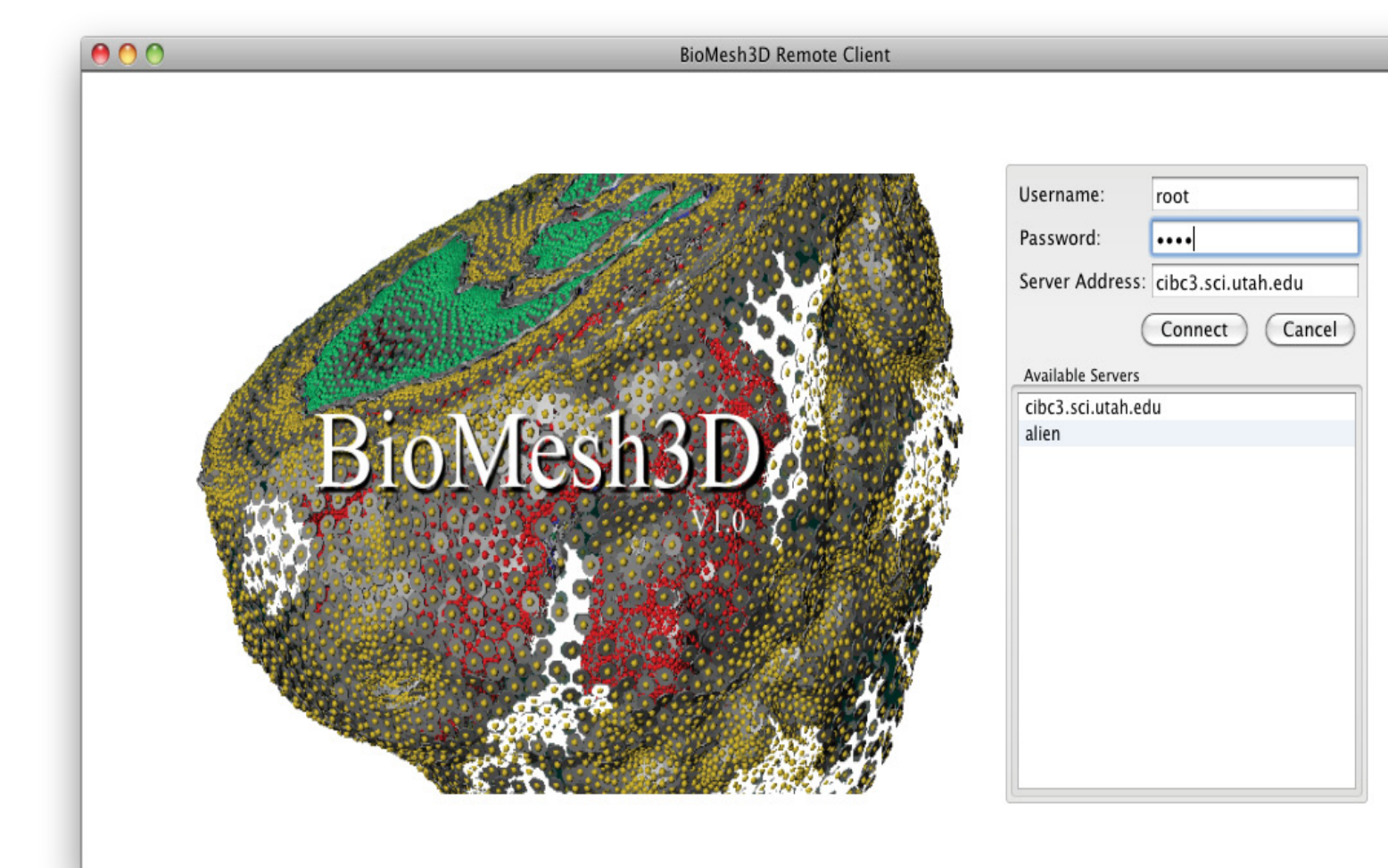
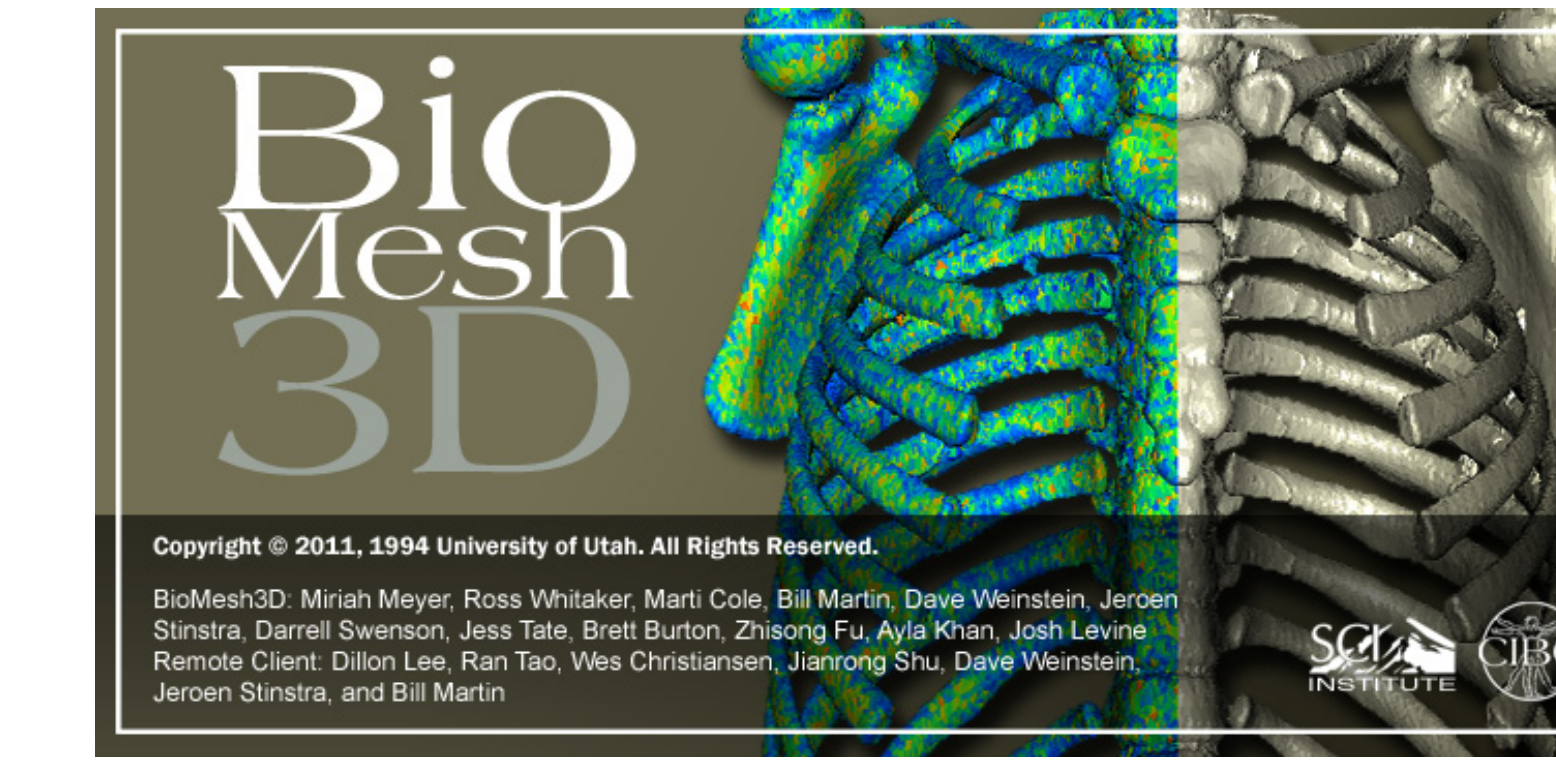
Other Examples



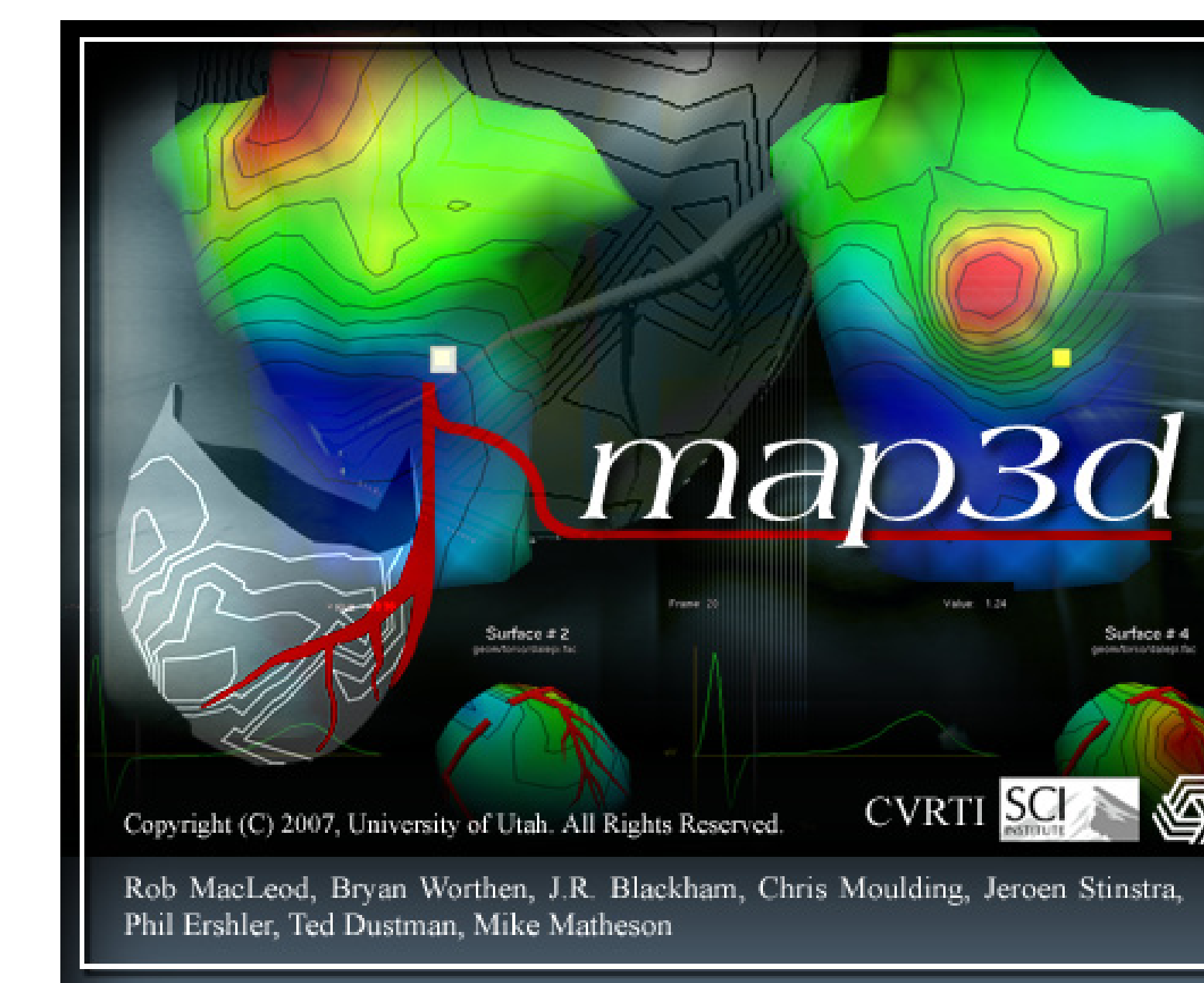
Seg3D



BioMesh3D



map3d



Forward/Inverse Toolkit

