

“Introduction to SCIRun” Class

Held at Northeastern University

August 21, 2006

David Weinstein
Jeroen Stinstra
Dav de St. Germain

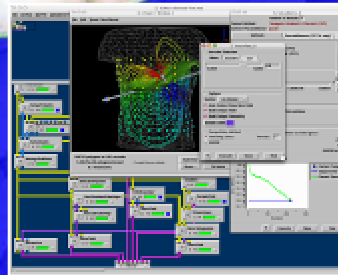
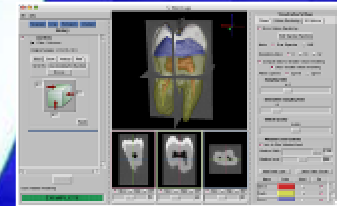
NIH-NCRR Center for
Integrative Biomedical
Computing (CIBC)

Scientific Computing and
Imaging Institute (SCI)

University of Utah

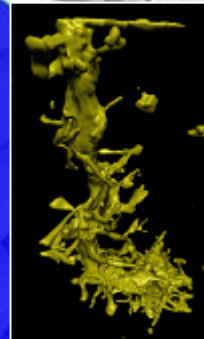
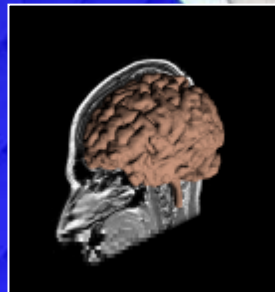
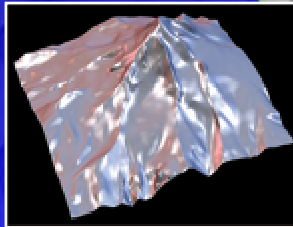
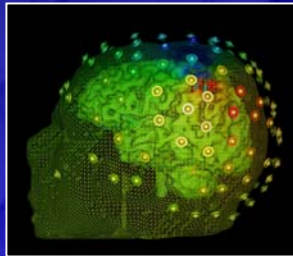
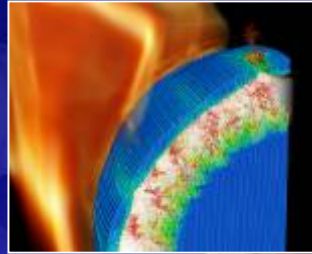


VISUALIZATION



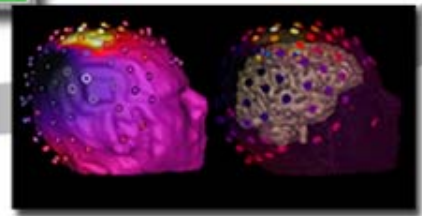
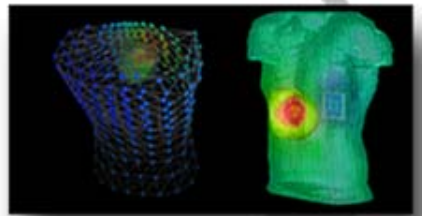
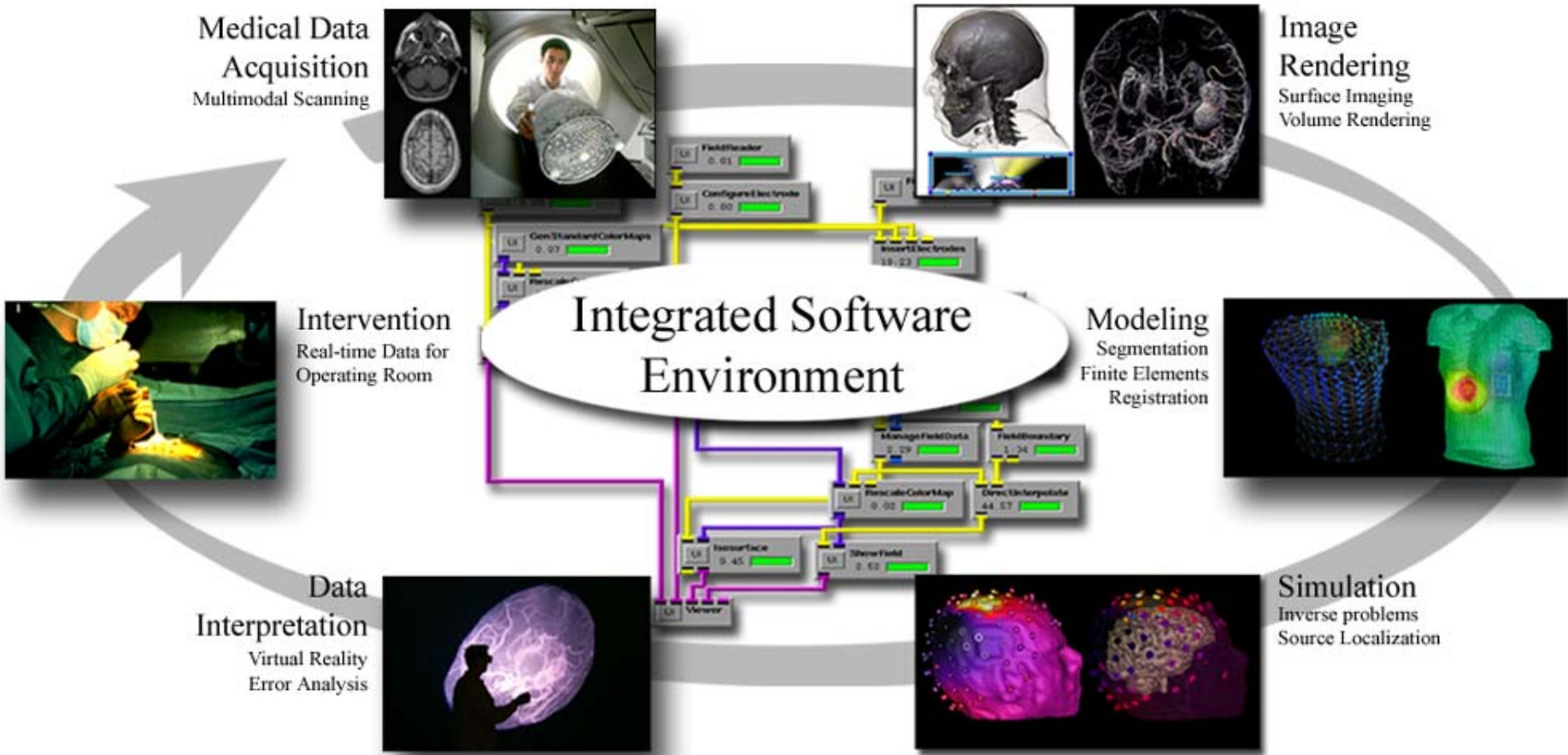
APPLICATIONS

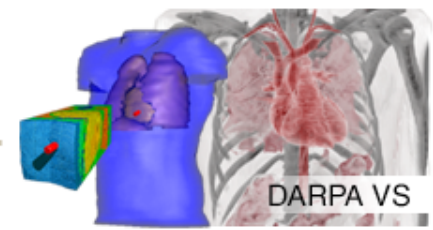
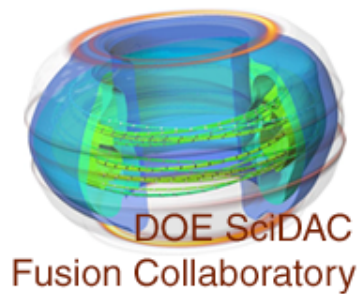
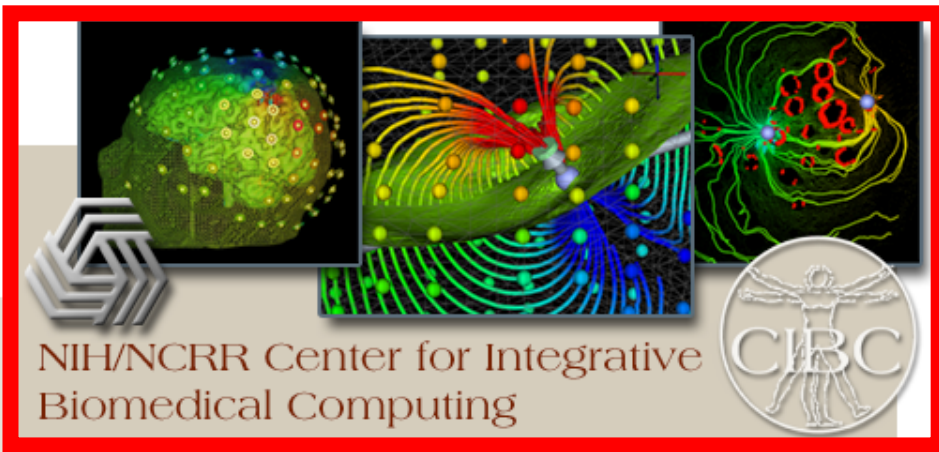
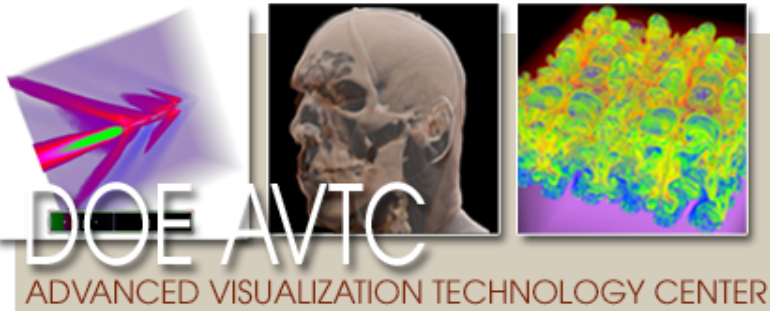
**Research
at SCI**



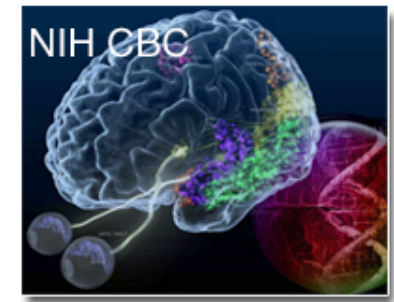
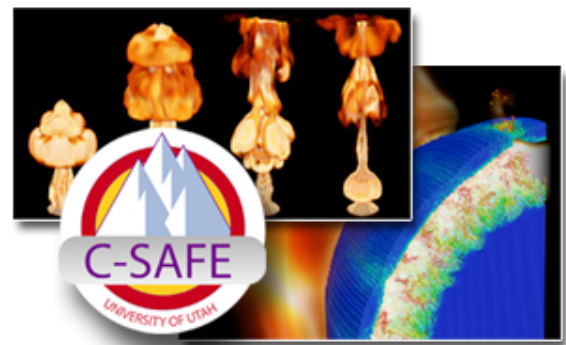
COMPUTING

IMAGING



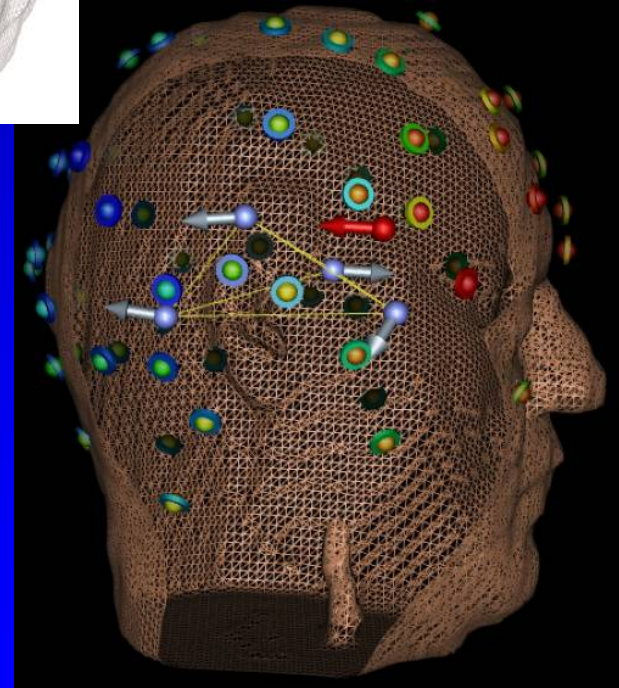
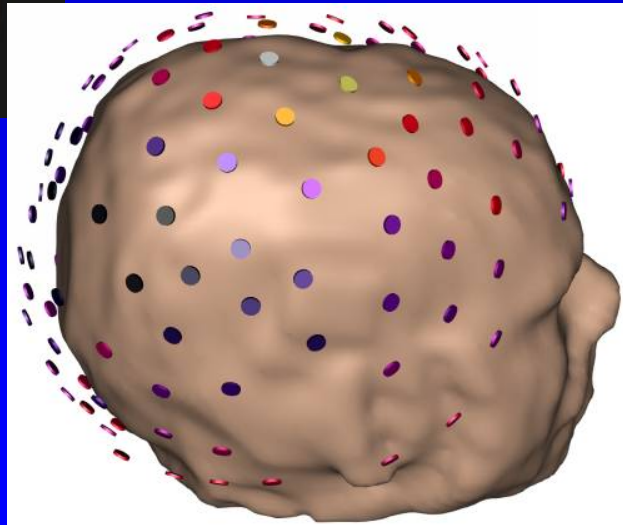
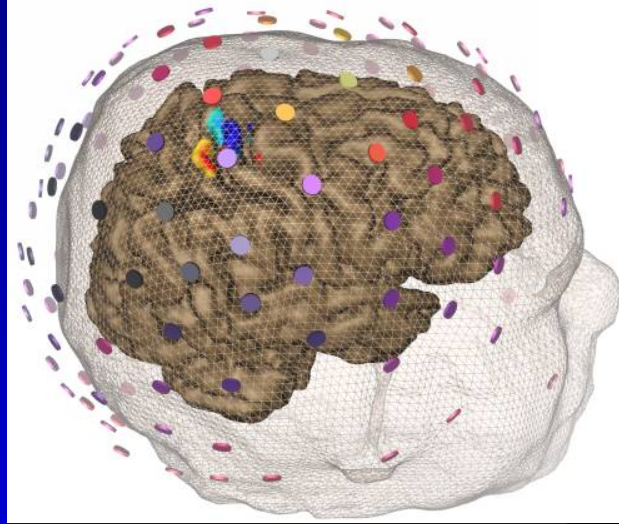
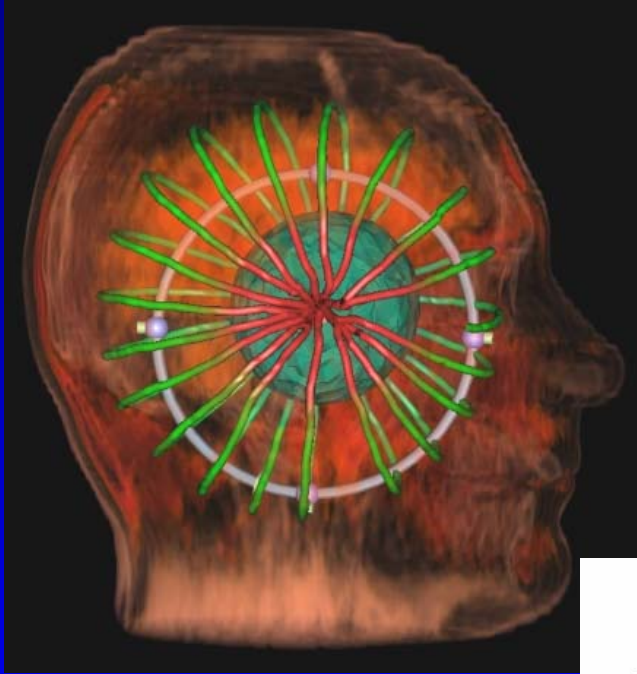


DOE ASCI C-SAFE



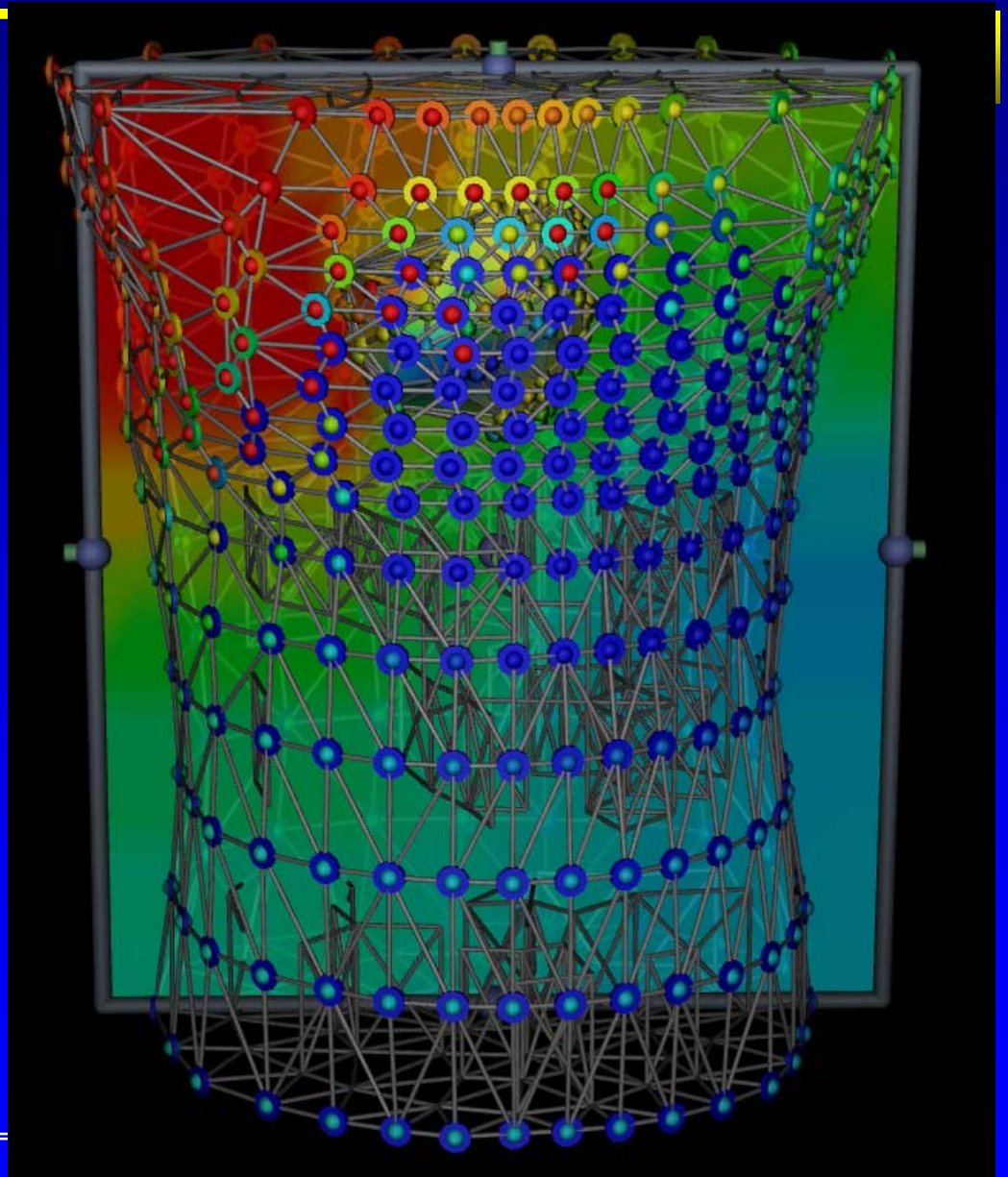
Forward and Inverse EEG

Introduction



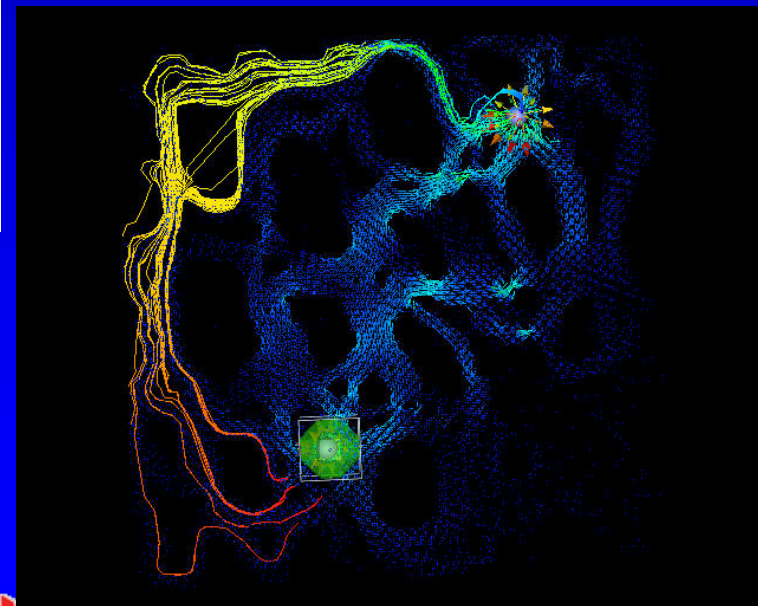
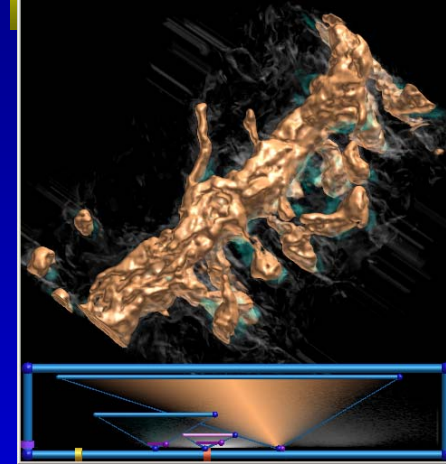
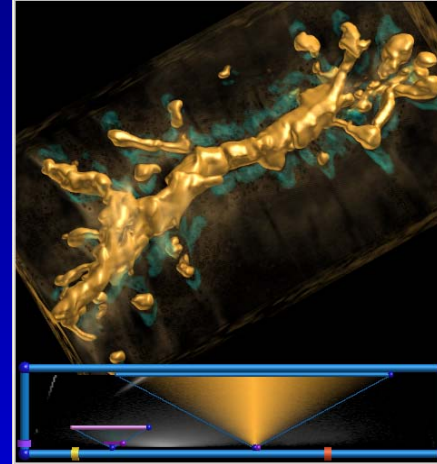
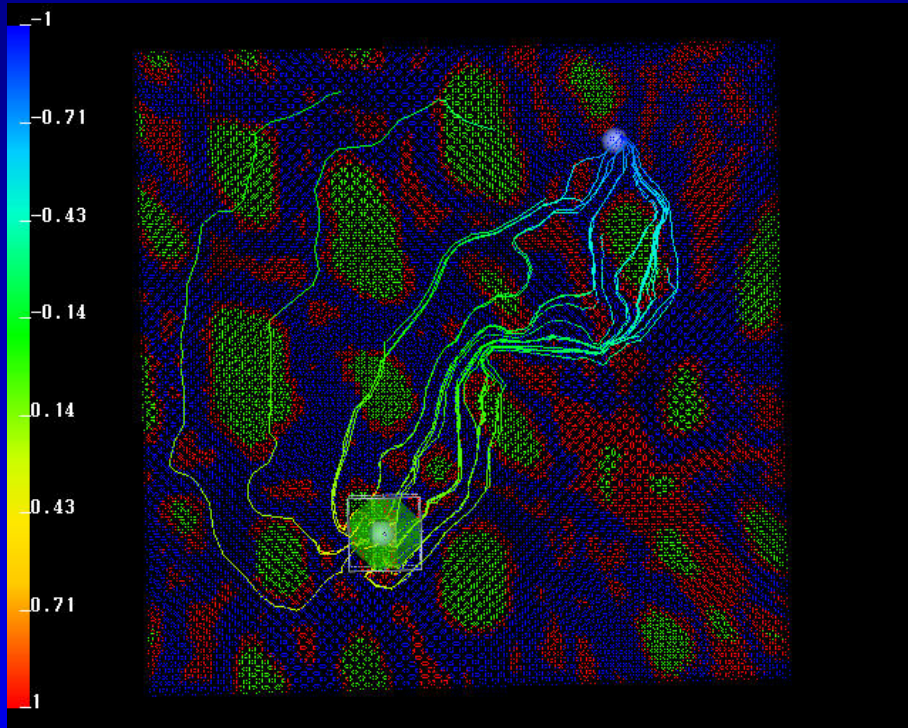
Electrocardiography

Torso Tank in BioPSE



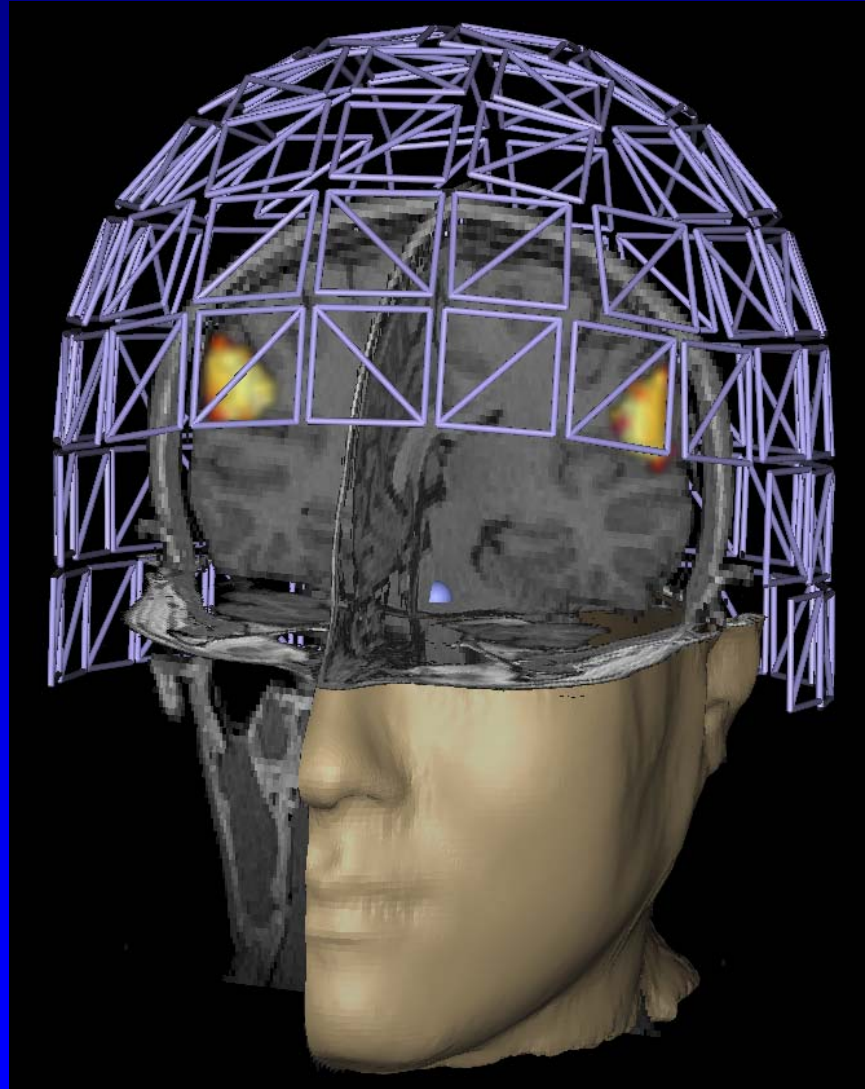
Neural Modeling and Visualization

Introduction



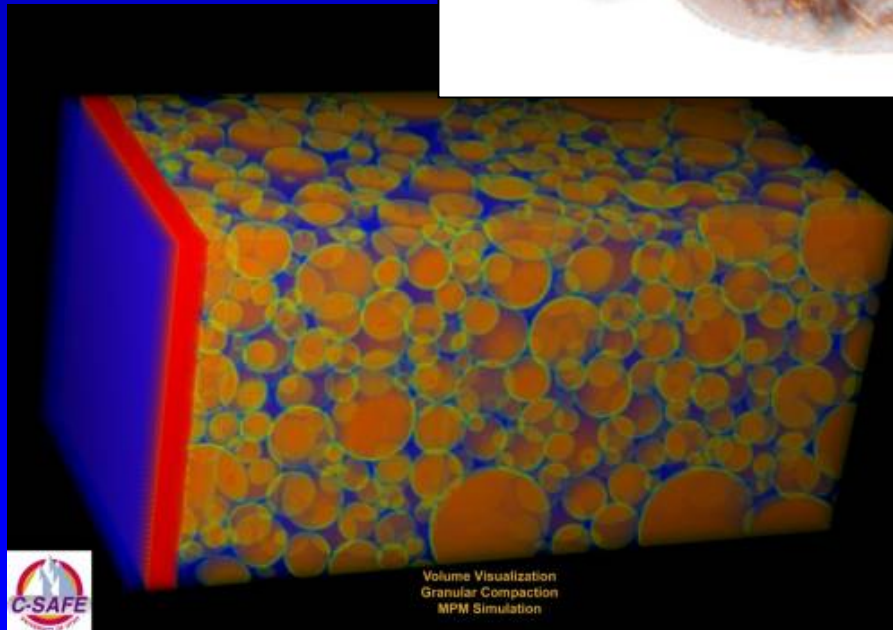
Magnetoencephalography

Introduction



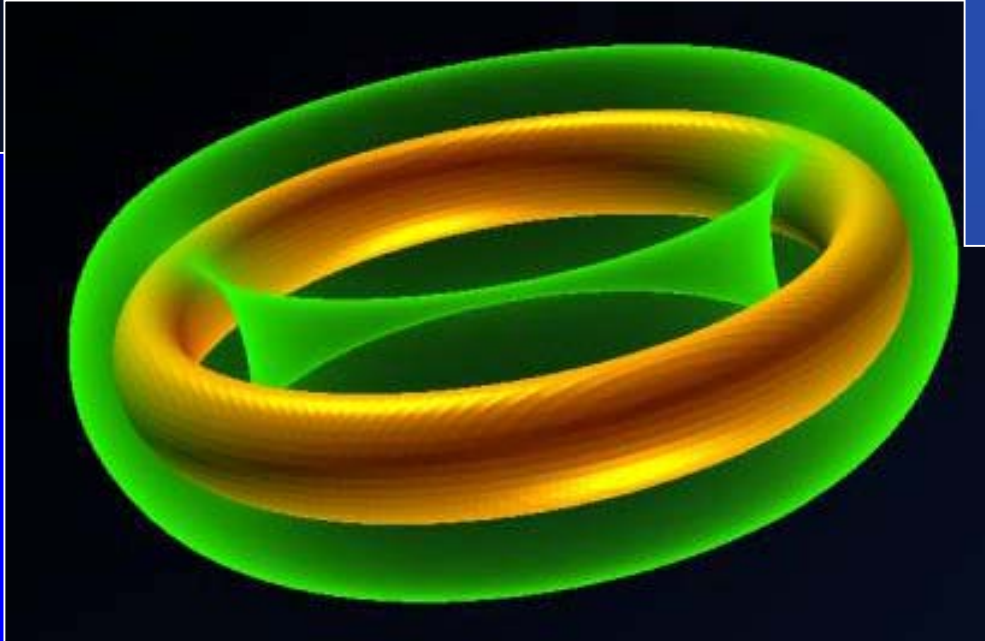
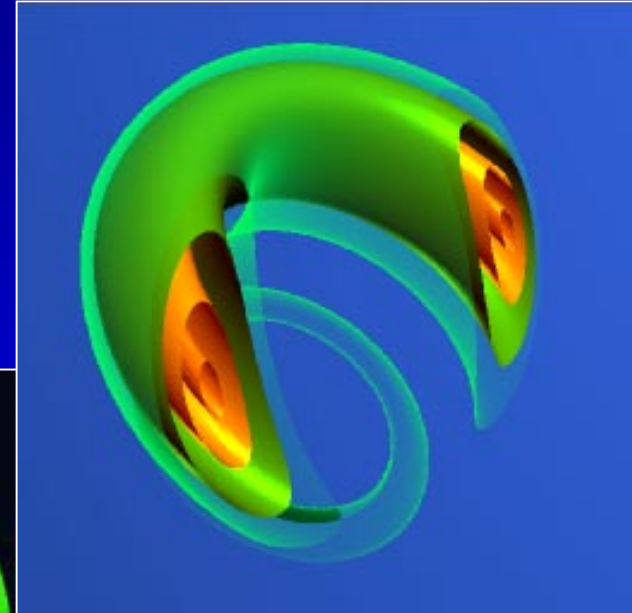
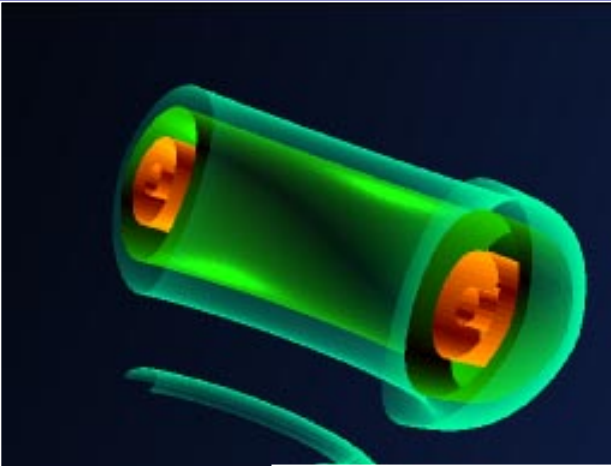
CSAFE: Fire-spread

Introduction



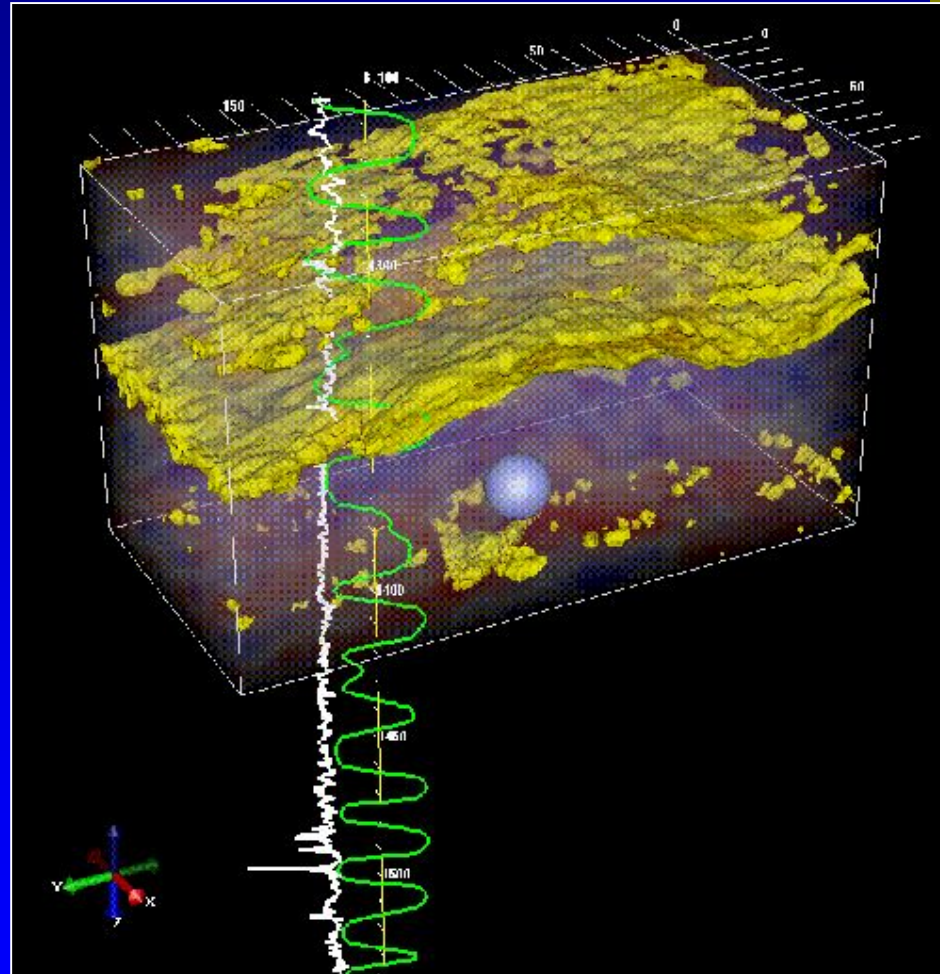
Nuclear Fusion: Tokamak

Introduction



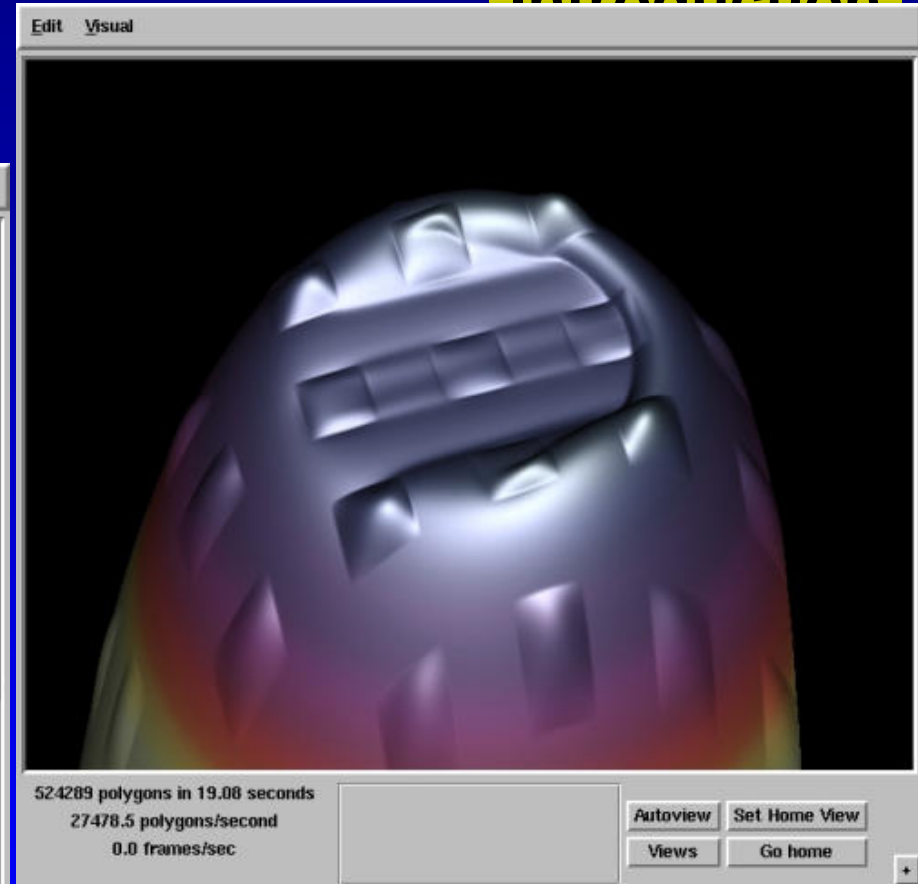
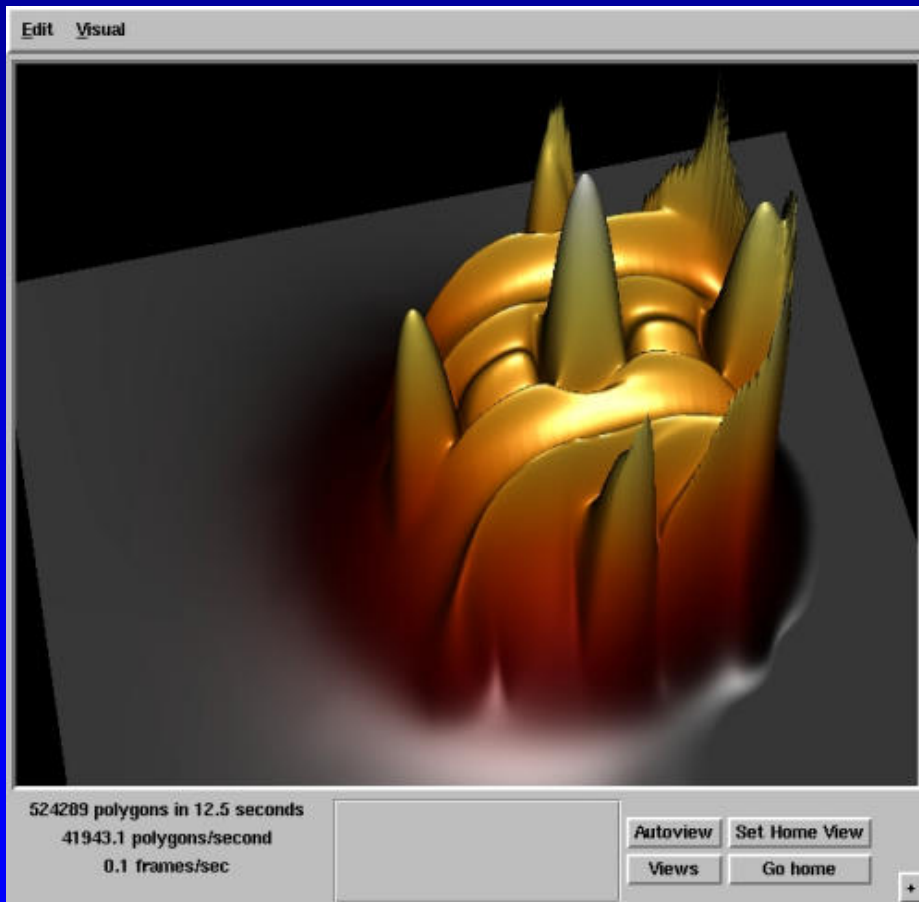
Seismic Data Visualization

Introduction

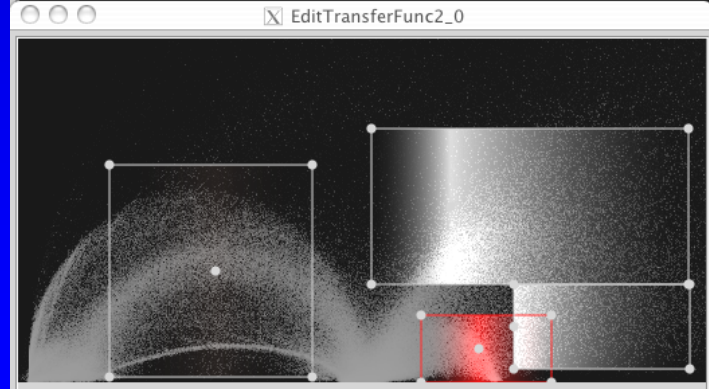
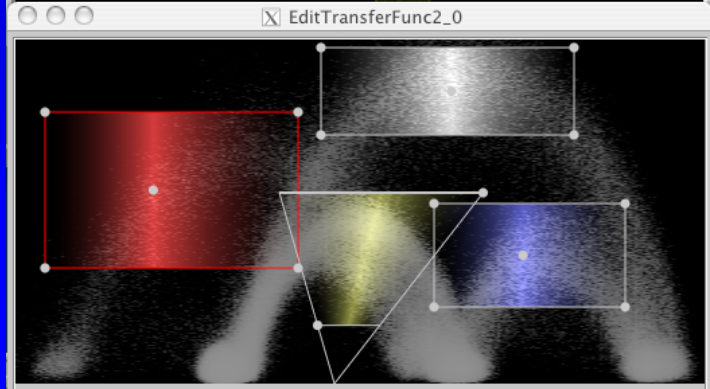
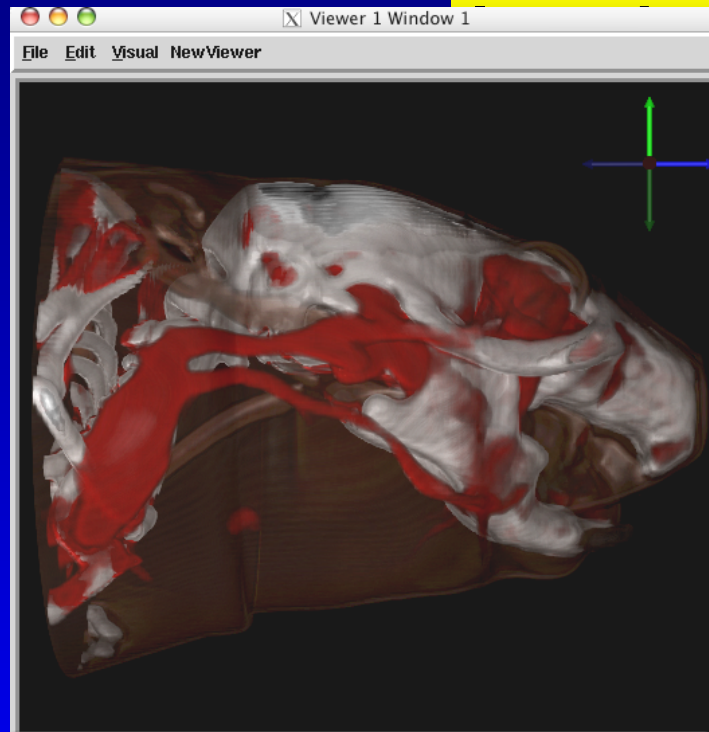
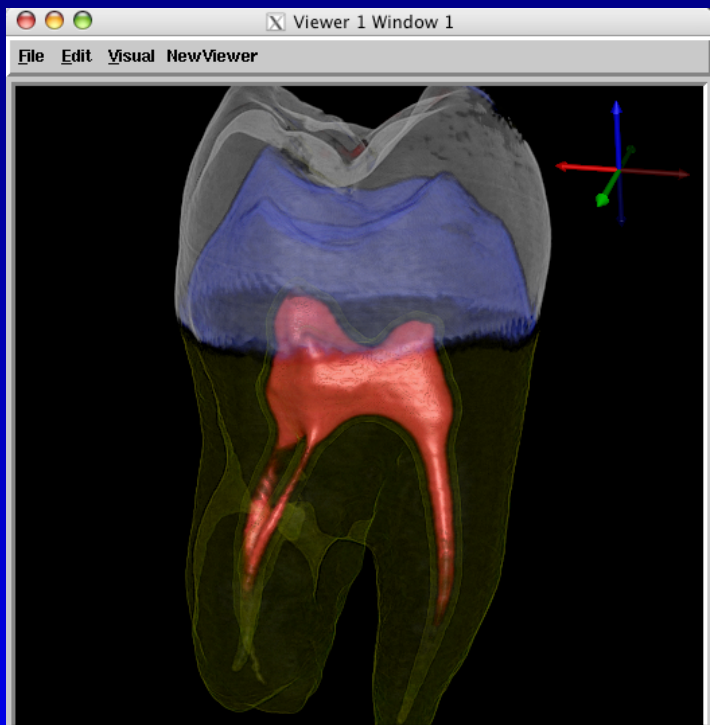


Elastohydrodynamic Lubrication (EHL)

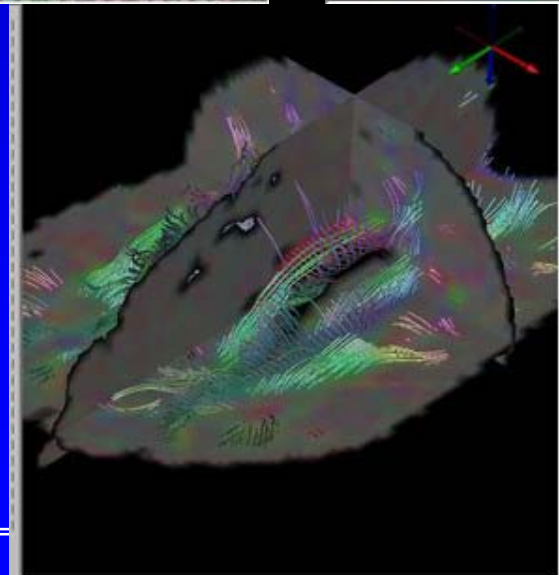
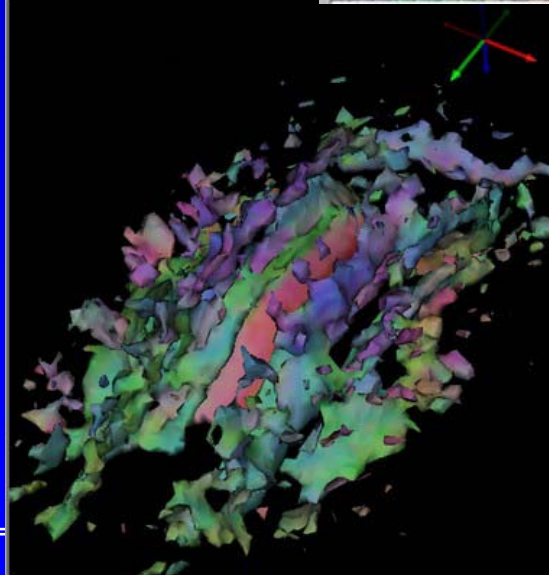
Introduction



Medical Volume Rendering



Diffusion Tensor Imaging



Demos

Introduction

1. Dataflow: Torso Simulation
2. PowerApp: BioFEM
3. PowerApp: BioImage